

AquaPod

PRE-ASSEMBLED PACKAGE PLANT ROOM



Product Overview

The Direct Pumps and Tanks AquaPod is a cost-effective, safe and efficient solution to plant room space, and for installing water systems underground.

using the latest technology Direct Pumps and Tanks can offer a modern system that overcomes many challenges associated with underground plant rooms, with unique features and simple maintenance the AquaPod also offers lower overall costs.

The AquaPod is a highly flexible system that allows you to configure and install almost any booster set and associated equipment that you would find in a packaged pump room such as:

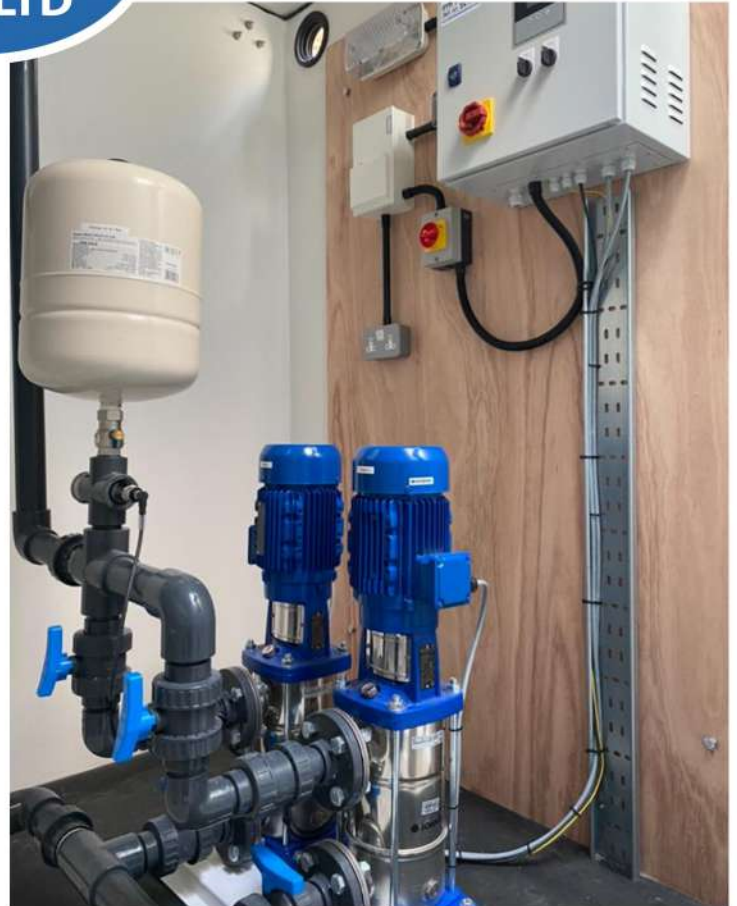
- ▶ An RCD for lighting and other electrical devices
- ▶ Fire protection
- ▶ Ultra-violet disinfection systems
- ▶ Boilers, generators and other equipment

Fast and Simple Installation

The AquaPod is a WRAS approved fully fitted underground GRP plant room which incorporates a packaged booster set which can be pre-installed in the AquaPod for easy installation.

The outer chamber features a steel base and reinforced support structure to provide you with a rock solid enclosure for your pump room.

The tank is lowered onto a flat foundations foundation and then a lean mix backfill can be poured around the chamber. A slab can then be cast directly onto the AquaPod cover or a pre-cast slab can be placed over the top.

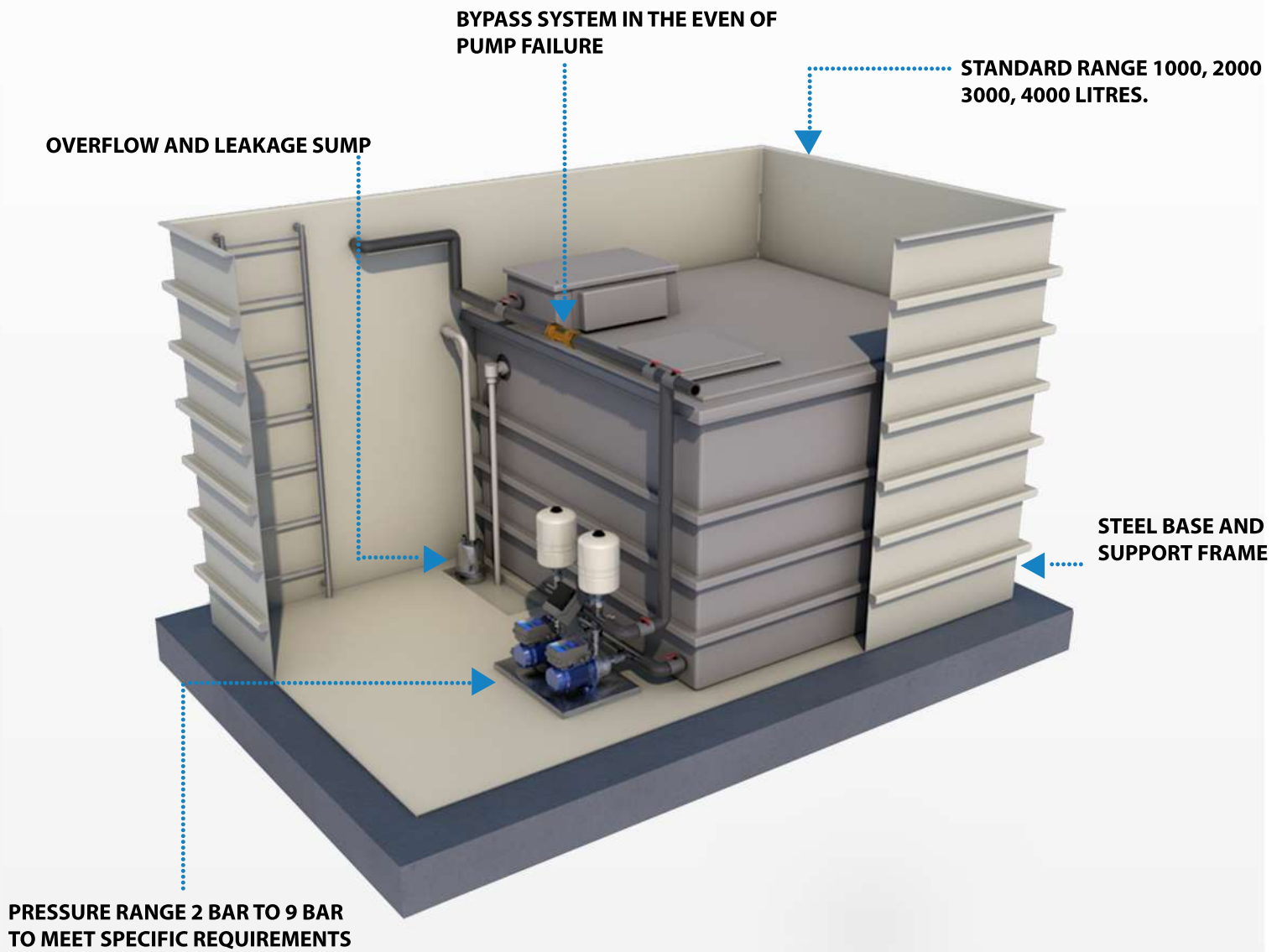


The AquaPod comes with a range of industry leading features to ensure a trouble free installation and a long life for your equipment.

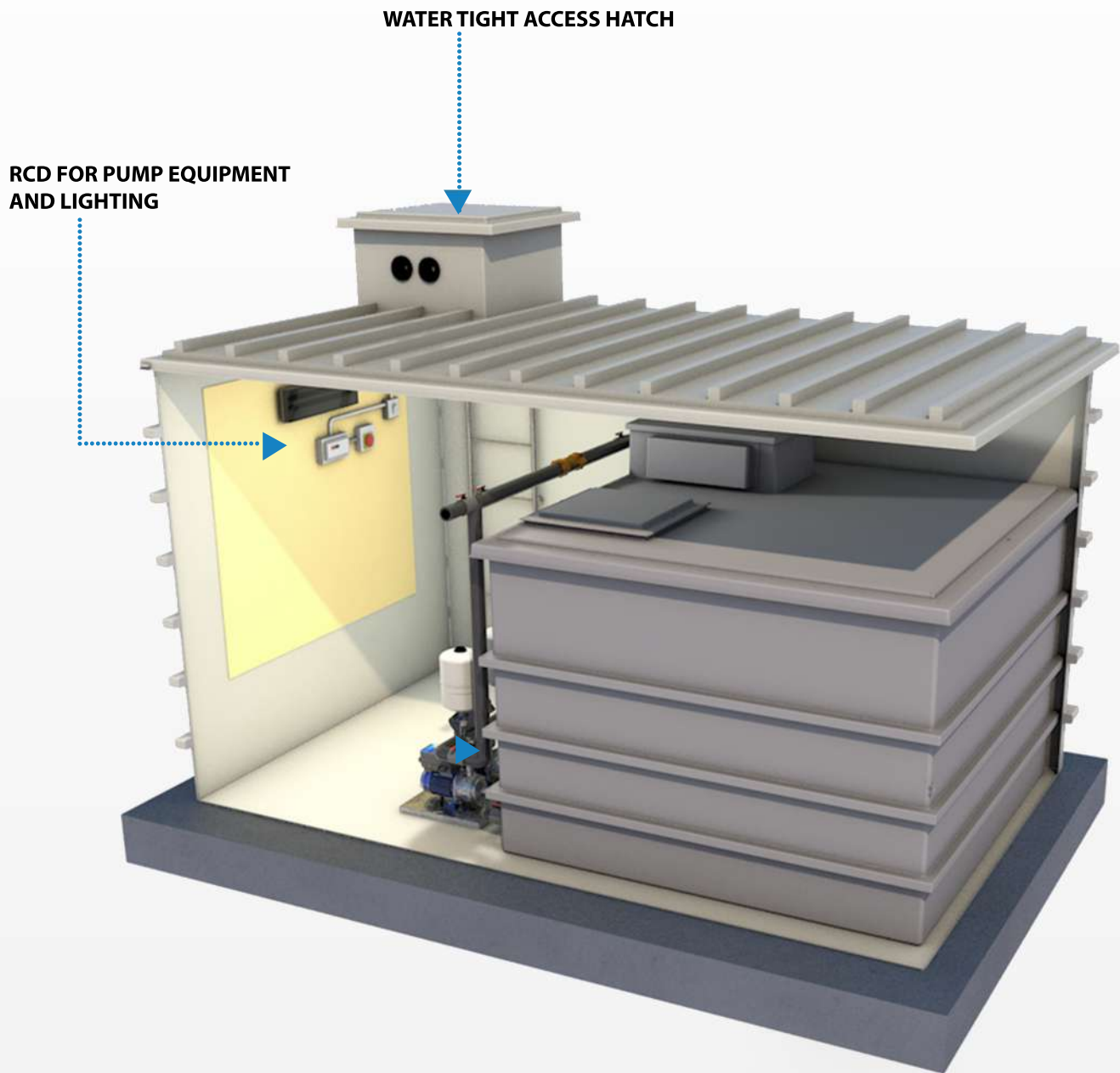
- ▶ Integrated light and power socket
- ▶ Electrode activated pump
- ▶ WRAS approved pump and tank
- ▶ 2 year warranty (terms apply)
- ▶ Optional extraction fans for increased ventilation
- ▶ Above ground mimic panel for monitoring AquaPod control panel
- ▶ All mechanical connections made outside the unit in a designated terminal area
- ▶ Multiple pump configurations available for varying flow and pressure as per your requirements
- ▶ Slow fill system to prevent water surge following a power cut or if the unit cuts out due to low water level
- ▶ Telemetry available as optional extra for MS alerts

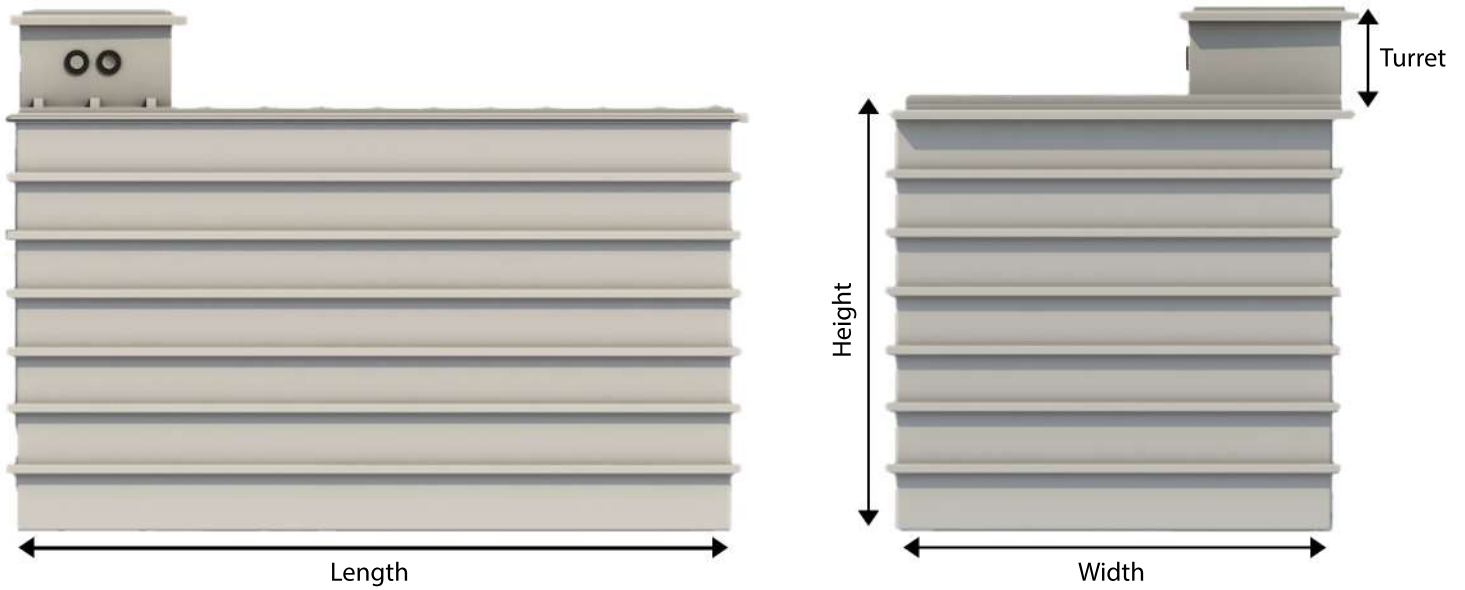


AquaPod Features at a Glance



AquaPod Features at a Glance





PRODUCT CODE	POD INTERNAL DIMENSIONS				TOTAL PUMP AREA	
	LENGTH	WIDTH	HEIGHT	TURRET HEIGHT	LENGTH	WIDTH
APBG1000	2700mm	1750mm	2200mm	300mm	1750mm	1500mm
APBG1500	2700mm	1750mm	2200mm	300mm	1750mm	1500mm
APBG2000	2700mm	2250mm	2200mm	300mm	2250mm	1500mm
APBG3001	2700mm	2250mm	2200mm	300mm	2250mm	1500mm
APBG4000	3700mm	2250mm	2200mm	300mm	2250mm	1500mm
APBG6001	3700mm	2250mm	2200mm	300mm	2250mm	1500mm

*All can be AB airgap and divided if required.



Direct Pumps and Tanks Ltd
Unit 12 Cossall Industrial Estate
Ilkeston
Derbyshire
DE7 5UA
Tel: 0115 9444474
Fax: 0115 9442040
Email: info@dpandt.co.uk