

TITLE  
**PWH3001**

DRAWN BY  
J. Ellison

DATE  
17/12/2021

CUSTOMER  
CUSTOMER

Foundation Requirements:  
The foundation area must be no less in length and width than the external dimensions of the enclosure. The foundation must be constructed so as to be capable of supporting the weight of the enclosure and equipment contained within it. The foundation must be continuous and be no more than ±2mm over any given metre.

ALL DIMENSIONS +/- 5mm  
UNLESS OTHERWISE STATED

DESCRIPTION:  
PWH3001 c/w Louvered vent

A4

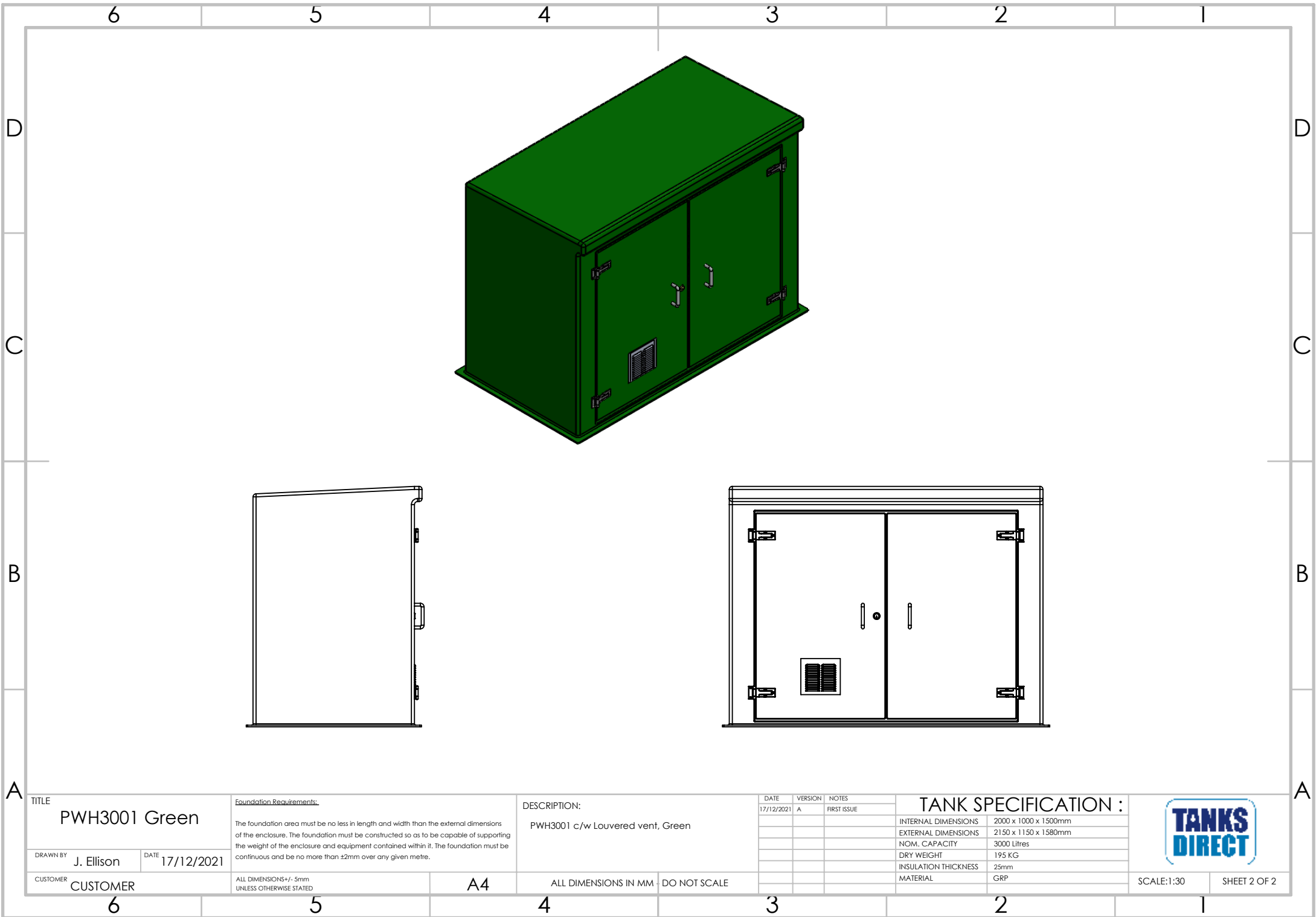
ALL DIMENSIONS IN MM DO NOT SCALE

DATE	VERSION	NOTES
17/12/2021	A	FIRST ISSUE

TANK SPECIFICATION :	
INTERNAL DIMENSIONS	2000 x 1000 x 1500mm
EXTERNAL DIMENSIONS	2150 x 1150 x 1580mm
NOM. CAPACITY	3000 Litres
DRY WEIGHT	195 KG
INSULATION THICKNESS	25mm
MATERIAL	GRP



SCALE:1:30 SHEET 1 OF 2



TITLE  
**PWH3001 Green**

DRAWN BY  
**J. Ellison**

DATE  
**17/12/2021**

CUSTOMER  
**CUSTOMER**

Foundation Requirements:  
 The foundation area must be no less in length and width than the external dimensions of the enclosure. The foundation must be constructed so as to be capable of supporting the weight of the enclosure and equipment contained within it. The foundation must be continuous and be no more than ±2mm over any given metre.

ALL DIMENSIONS +/- 5mm  
 UNLESS OTHERWISE STATED

DESCRIPTION:  
**PWH3001 c/w Louvered vent, Green**

A4

ALL DIMENSIONS IN MM    DO NOT SCALE

DATE	VERSION	NOTES
17/12/2021	A	FIRST ISSUE

**TANK SPECIFICATION :**

INTERNAL DIMENSIONS	2000 x 1000 x 1500mm
EXTERNAL DIMENSIONS	2150 x 1150 x 1580mm
NOM. CAPACITY	3000 Litres
DRY WEIGHT	195 KG
INSULATION THICKNESS	25mm
MATERIAL	GRP



SCALE:1:30    SHEET 2 OF 2