

TITLE
PWH4001 Grey

DRAWN BY
J. Ellison

DATE
18/01/2022

CUSTOMER
CUSTOMER

Foundation Requirements:
The foundation area must be no less in length and width than the external dimensions of the enclosure. The foundation must be constructed so as to be capable of supporting the weight of the enclosure and equipment contained within it. The foundation must be continuous and be no more than ±2mm over any given metre.

ALL DIMENSIONS +/- 5mm
UNLESS OTHERWISE STATED

DESCRIPTION:
PWH4001 c/w Louvered vent

A4

ALL DIMENSIONS IN MM - DO NOT SCALE

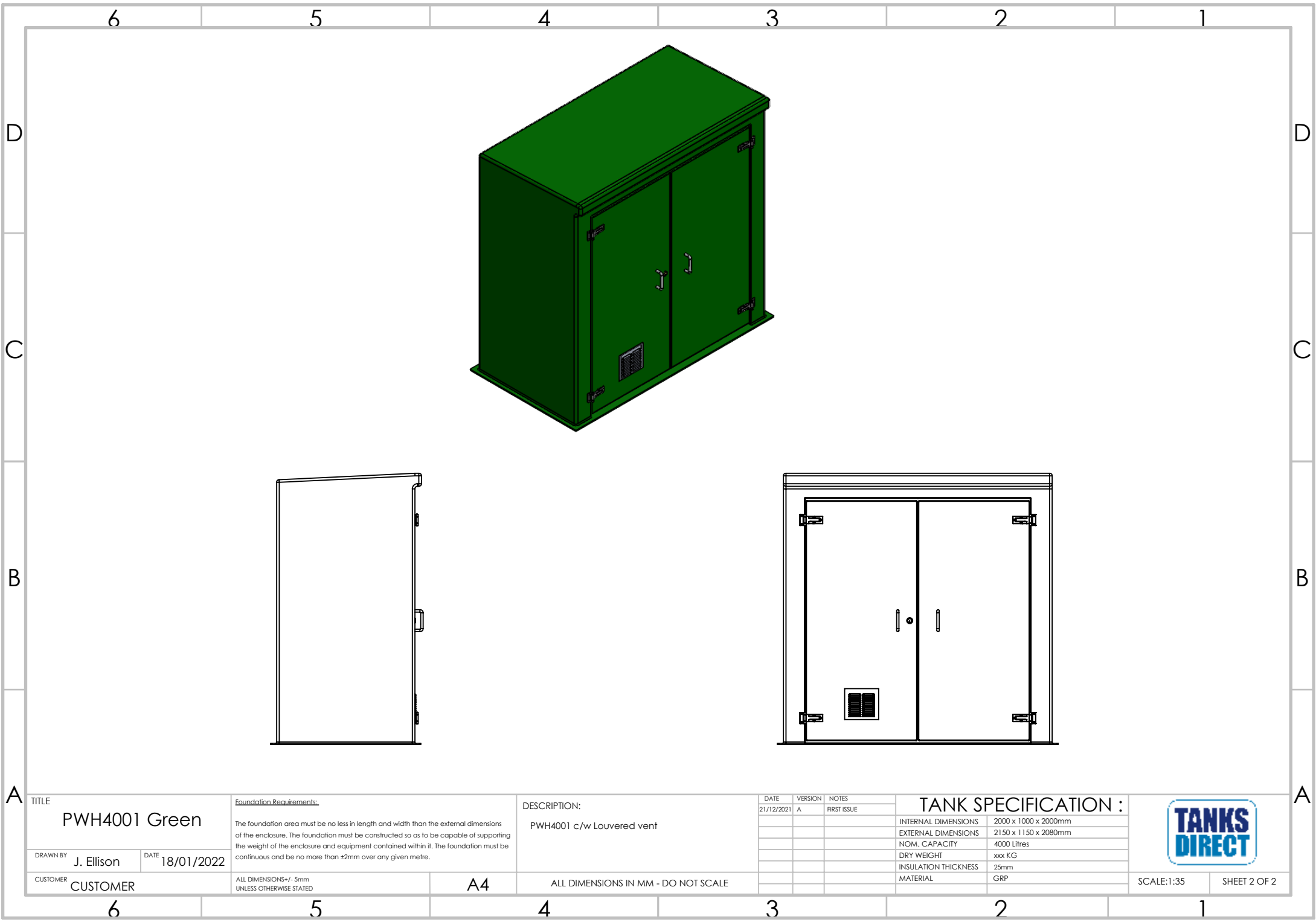
DATE	VERSION	NOTES
21/12/2021	A	FIRST ISSUE

TANK SPECIFICATION :	
INTERNAL DIMENSIONS	2000 x 1000 x 2000mm
EXTERNAL DIMENSIONS	2150 x 1150 x 2080mm
NOM. CAPACITY	4000 Litres
DRY WEIGHT	xxx KG
INSULATION THICKNESS	25mm
MATERIAL	GRP



SCALE:1:35

SHEET 1 OF 2



TITLE
PWH4001 Green

DRAWN BY J. Ellison DATE 18/01/2022

CUSTOMER CUSTOMER

Foundation Requirements:
The foundation area must be no less in length and width than the external dimensions of the enclosure. The foundation must be constructed so as to be capable of supporting the weight of the enclosure and equipment contained within it. The foundation must be continuous and be no more than ±2mm over any given metre.

ALL DIMENSIONS +/- 5mm UNLESS OTHERWISE STATED

DESCRIPTION:
PWH4001 c/w Louvered vent

A4

ALL DIMENSIONS IN MM - DO NOT SCALE

DATE	VERSION	NOTES
21/12/2021	A	FIRST ISSUE

TANK SPECIFICATION :	
INTERNAL DIMENSIONS	2000 x 1000 x 2000mm
EXTERNAL DIMENSIONS	2150 x 1150 x 2080mm
NOM. CAPACITY	4000 Litres
DRY WEIGHT	xxx KG
INSULATION THICKNESS	25mm
MATERIAL	GRP



SCALE:1:35 SHEET 2 OF 2