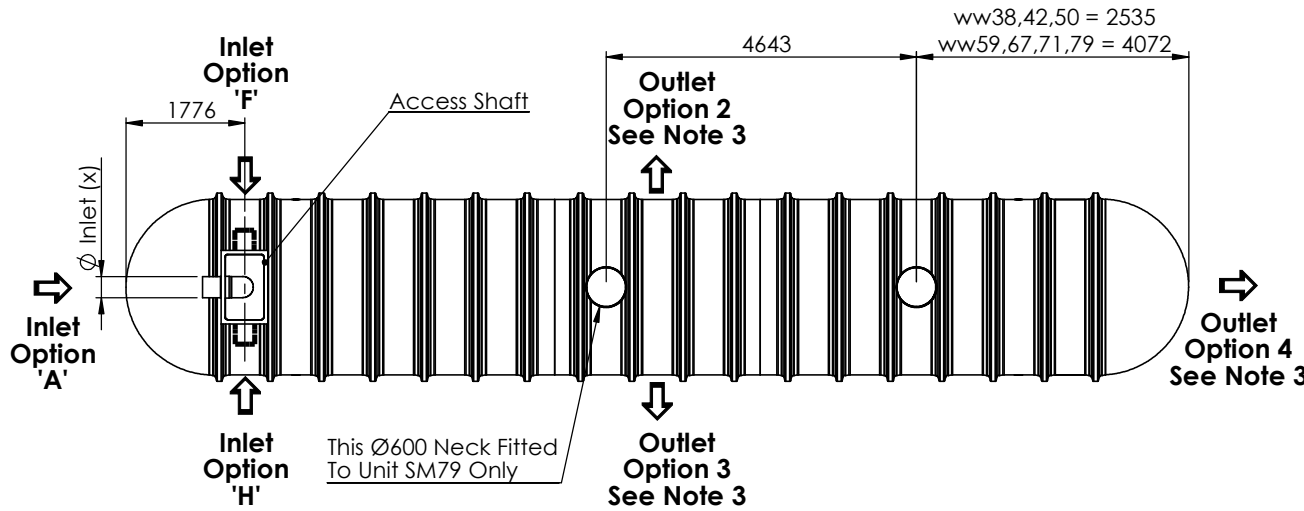


Notes: -

1. Inlet Invert To Be Confirmed By Customer.
2. Interconnecting Low Level Pipework Is $\varnothing 200\text{mm}$.
3. Inlet Options (A,F & H) Dependant On Site Pipework Layout, To Be Specified At Order Stage.
4. Concrete backfill required
5. If Required, Extensions Will Be Supplied Loose And Fitted On-Site.

Inlet Invert	
ww	Invert
04	0.4m Invert
10	1.0m Invert
15	1.5m Invert
20	2.0m Invert

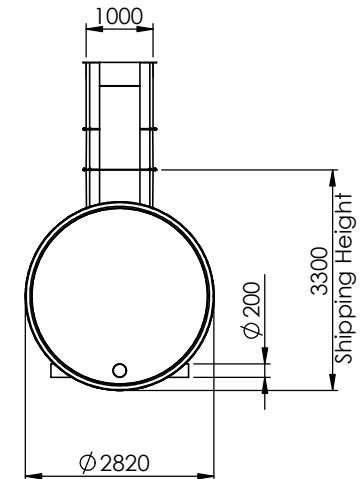
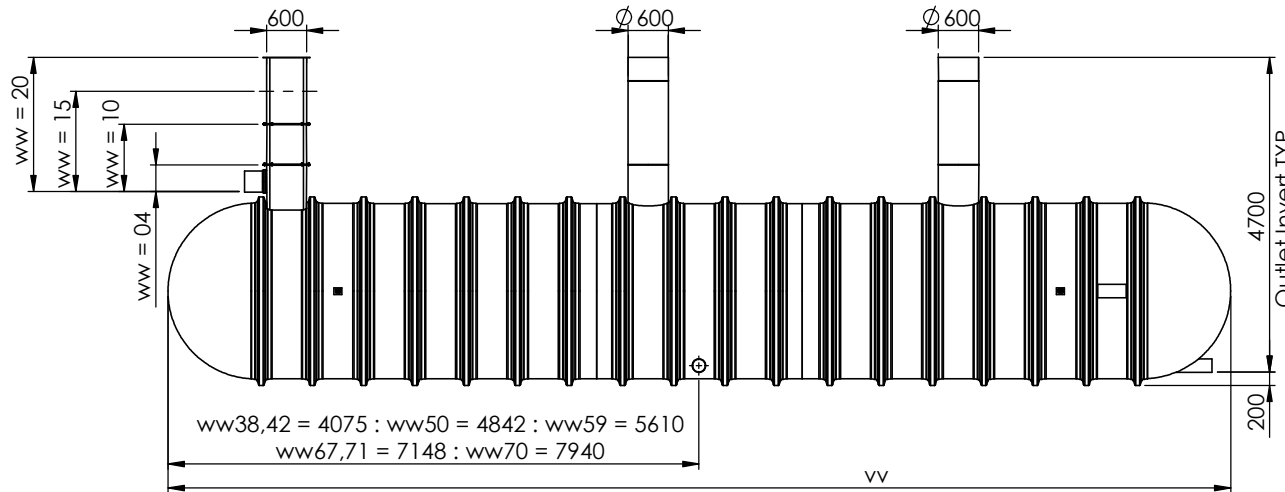
Product	Tank Sizes		
	vv	Size	Length Of Unit
SM	38	38000L	8150
	42	42000L	8917
	50	50000L	10453
	59	59000L	11999
	67	67000L	13528
	71	71000L	14295
	79	79000L	15833



Inlet Orientation Options	
y	Orientation
A	Refer To Drawing
F	
H	

Inlet Pipe Size Options	
x	Pipe
A	$\varnothing 110\text{mm}$
C	$\varnothing 160\text{mm}$
D	$\varnothing 200\text{mm}$
F	$\varnothing 250\text{mm}$
G	$\varnothing 315\text{mm}$
Outlet Pipe $\varnothing 200$ Standard	

Outlet Orientation Options	
zzz	Orientation
2--	Refer To Drawing
-3-	
--4	
23-	
-34	
2-4	
234	



Please check with Kingspan Water & Energy for the latest Issue of the drawing

Issue	Date	Drawn By	Approved By	Description
07	17/11/2021	D.Owen	D.Owen	ECN1593
06	27/01/2021	D.Musvaburi		CC1548

Modelled By : D.Owen
Weight : 3099.90 kg
Material : Various

Tolerance (unless stated) :
Thickness : n/a
Surface Area : m²

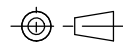
Drawing : DS1240

Page 1 of 1

AquaHold SM $\varnothing 2.6$ SuDS Master Tank

All Dimensions In mm

Scale: Do Not Scale



Third Angle Projection

Kingspan Water & Energy reserve the right to alter the details of this drawing without prior notice. This drawing is copyright and may not be reproduced or used without the written permission of Kingspan Water & Energy

