

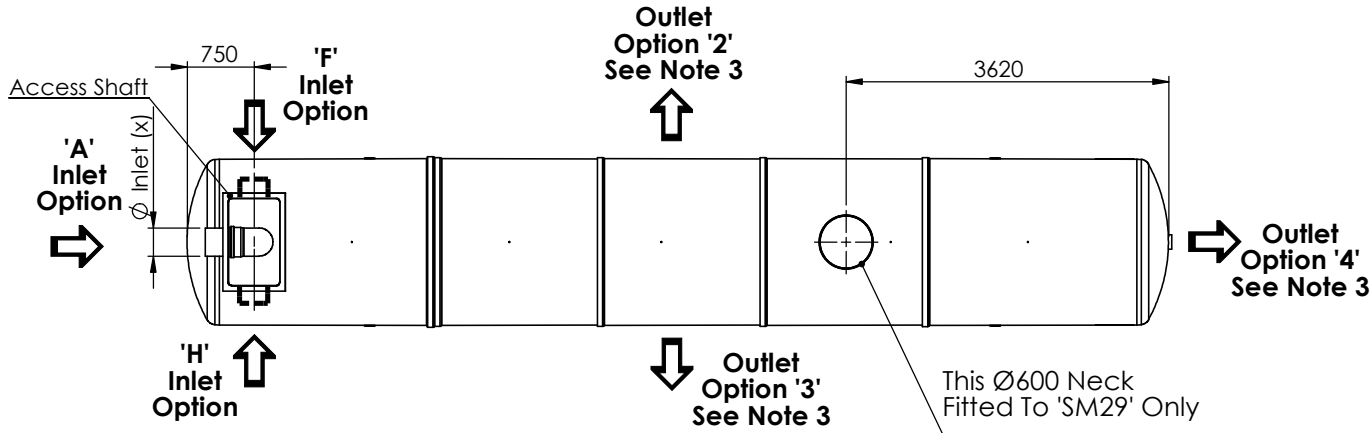
Notes: -

1. Inlet Invert To Be Confirmed By Customer.
2. Interconnecting Low Level Pipework Is  $\varnothing 160\text{mm}$
3. Inlet Options (A,F & H) Dependant On Site Pipework Layout, To Be Specified At Order Stage.
4. Concrete backfill required
5. If Required, Extensions Will Be Supplied Loose And Fitted On-Site.

Product	Tank Sizes		
	vv	Size	Length Of Unit
SM	14	14000L	5535
	19	19000L	7437
	24	24000L	9267
	29	29000L	11012

Inlet Orientation Options	
y	Orientation
A	Refer To Drawing
F	
H	

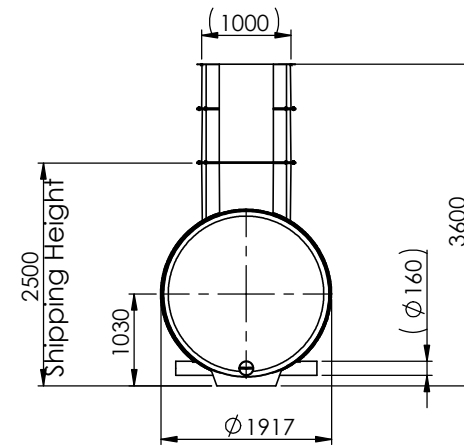
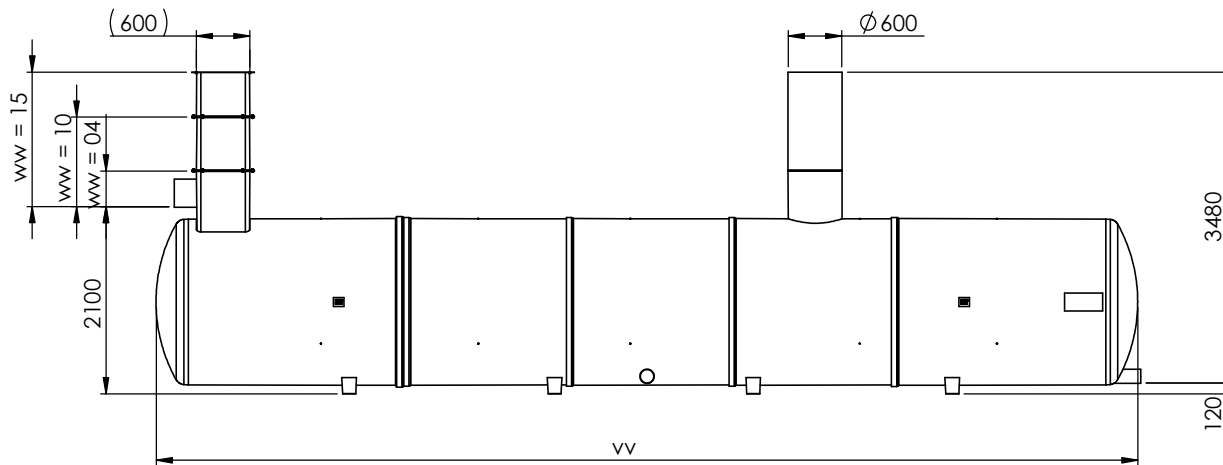
Inlet Invert	
ww	Invert
04	0.4m Invert
10	1.0m Invert
15	1.5m Invert



Outlet Orientation Options	
zzz	Orientation
2--	Refer To Drawing
-3-	
--4	
23-	
-34	
2-4	
234	

Inlet Pipe Size Options	
x	Pipe
A	$\varnothing 110\text{mm}$
C	$\varnothing 160\text{mm}$
D	$\varnothing 200\text{mm}$
F	$\varnothing 250\text{mm}$
G	$\varnothing 315\text{mm}$

Outlet Pipe	
$\varnothing 160$ Standard	



Please check with Kingspan Water & Energy for the latest Issue of the drawing

Issue	Date	Drawn By	Approved By	Description
07	17/11/2021	D.Owen	D.Owen	ECN1593
06	26/01/2021	D.Musvaburi		CC1548

Modelled By : D.Owen  
Weight : 903.72 Kg  
Material : Various

Tolerance (unless stated) :  
Thickness : n/a  
Surface Area : m<sup>2</sup>

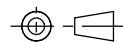
**Drawing : DS1238**

Page 1 of 1

AquaHold SM  $\varnothing 1.8$  SuDS Master Tank

All Dimensions In mm

Scale: Do Not Scale



Third Angle Projection

Kingspan Water & Energy reserve the right to alter the details of this drawing without prior notice. This drawing is copyright and may not be reproduced or used without the written permission of Kingspan Water & Energy

