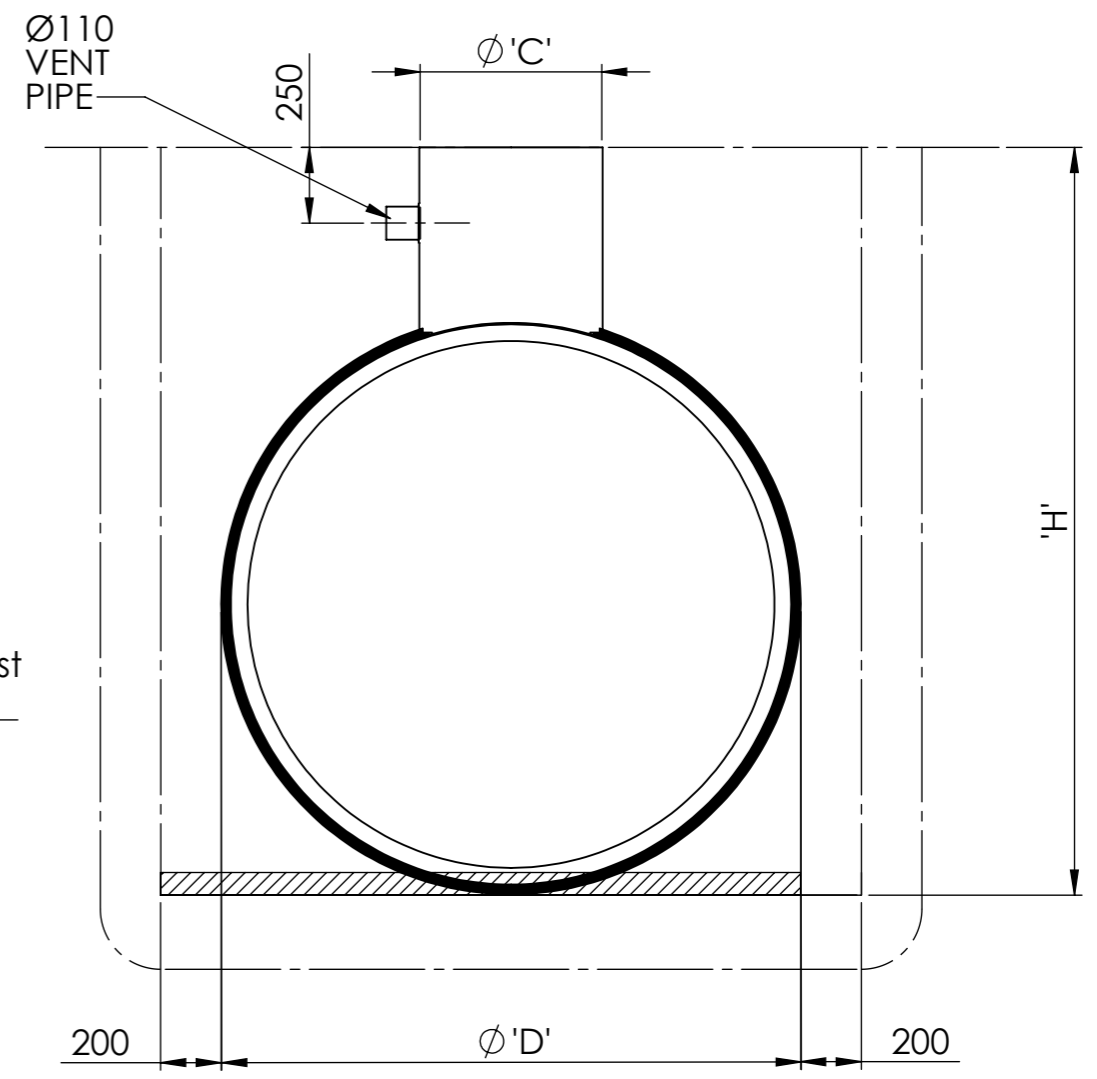


Product Information Table										
Product	Volume (L)	Empty Weight (kg)	Dimensions (mm)							
			'A'	'B'	'C'	'D'	'E'	'F'	'G'	'H'
SLH028	2800	165	3020	1510	Ø460	Ø1225	500	1260	Ø110	1760
SLH038	3800	185	3900	1950	Ø460	Ø1225	500	1260	Ø110	1760
SLH048	4800	195	3775	1888	Ø600	Ø1425	500	1445	Ø110	1945
SLH057	5700	205	4275	2138	Ø600	Ø1425	500	1445	Ø110	1945
SLH071	7150	280	3230	1615	Ø600	Ø1920	500	1950	Ø160	2450
SLH091	9150	325	3965	1983	Ø600	Ø1920	500	1950	Ø160	2450

- Notes:
- Tanks have an inlet invert depth of 0.5m as standard. Upon request this may be extended up to 1.5m via neck GRP riser pieces.
  - This drawing should be used for dimensional information only. Refer to installation guidelines for full tank installation.
  - Confirm with local building regulations if additional venting is required.
  - If backfilling with peashingle the tank must be strapped down using suitable anchoring points and strapping (others)
  - SLH028, 038, 048 & 057 are available with Ø160mm pipework. SLH071 & 091 are available with Ø110mm pipework although Ø160mm is recommended.



Please check with Kingspan Environmental that this drawing is the latest issue				
Issue	Date	Drawn by	Approved by	Description
06	30/09/22	JMcM	JMcM	ECR189/ECN1626 - Remove Tank Feet
05	15/07/22	JMcM	JMcM	CN0361 - No Feet Trial

Modelled By : Name  
 Weight : 279.72 Kg  
 Material : Various

Tolerance (unless stated) :  
 Thickness : n/a  
 Surface Area : m<sup>2</sup>

**Drawing : DS1220** Page 1 of 1  
 7150L Shallow Dig Silage Tank

All Dimensions In mm Scale: Do Not Scale 
  
Third Angle Projection

A:\Wastewater\Engineering\Drawing Data\02 - Sales Drawings\DS\DS - 12\DS1220

Kingspan Water & Energy reserve the right to alter the details of this drawing without prior notice. This drawing is copyright and may not be reproduced or used without the written permission of Kingspan Water & Energy

