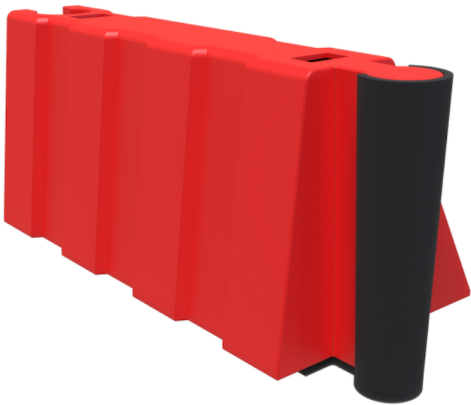


**Technical Data Sheet | FL-FS065P**  
**Floodstop | 0.65m High | Pre-Filled**

0.65m high pre-filled Floodstop unit. To be placed every other unit. Uses 0.9m key and multi-hub.  
Freeboard required.

**Product Characteristics**

External Dimensions (WxDxH)	1390 x 650 x 650mm (1195mm connected width)
Unit Weight	Approx. 19kg
Colours	White, red
Materials	Linear low density polyethylene



**Product Features**

- Lightweight.
- Cost effective.
- Easy and quick to assemble.
- Self balancing.
- Unaffected by wind.
- Versatile.
- Gasket sealing.
- Built in key.
- Reusable.\*

\*Replace any components that have been compromised.

Colour choice will be reflected in product code