



SITE BOOST BOOSTER SET



SITE BOOST APPLICATIONS

Specifically desinged for use on active construction and building sites for boosting water to bib taps and portable accomodation.

- Bib taps and water outlets
- Portable accomodation
- Site bathrooms
- Wash-down areas

PRODUCT OVERVIEW

The Site Boost is specifically designed to supply potable water to sites where mains water pressure is insufficient. The Site Boost booster set comes complete with a fixed speed operation and with a powerful submersible pump.

The chamber is constructed from durable MDPE polymer which is ideal for useage in applications where damage may occur.

The Site Boost booster set is ideal for building sites and commercial developments where a durable booster water supply is required.

The Site Boost fits into tight spaces and can be easily hidden away in a small room or plant area. It also comes presassembled, making installation quick and easy.

KEY FEATURES

The Site Boost booster set comes packed with a range of industry leading technology, key features include:-

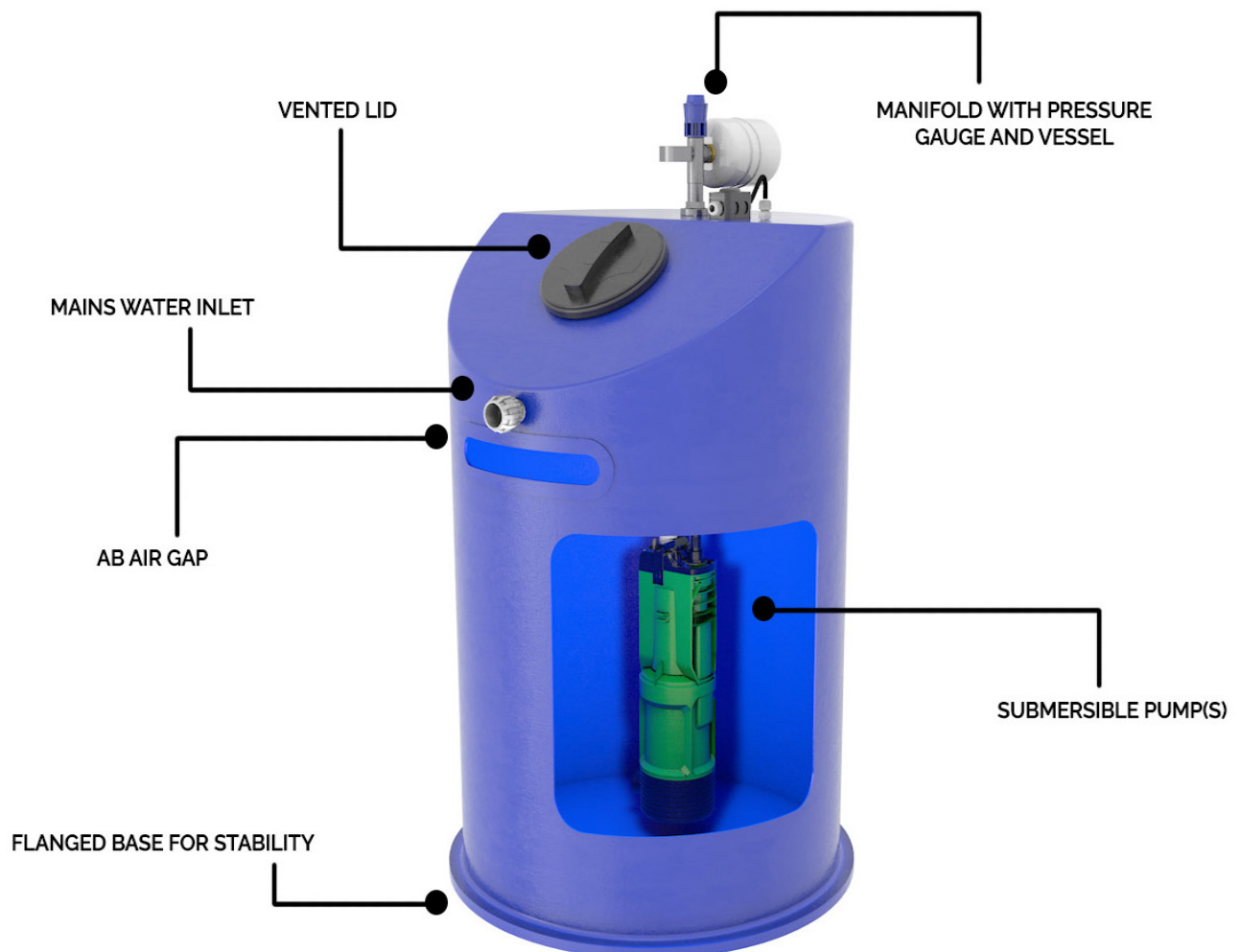
- Pre-fitted WRAS approved ball valve
- DAB Divertron 900 pump(s) with pressure switch
- AB airgap
- Integrated controller within the pump
- Dry run protection with auto restart
- WRAS approved vessel
- Durable MDPE chamber

CHAMBER SIZE GUIDE

Capacity	Pump Arrangement	Diameter (mm)	Height (mm)	Outlet (Single)	Outlet (Twin)	Airgap
200	Single	610	1060	32mm MDPE	25mm MDPE	AB
300	Single	610	1430	32mm MDPE	25mm MDPE	AB
550	Single/Twin	780	1430	32mm MDPE	25mm MDPE	AB
750	Single/Twin	780	1930	32mm MDPE	25mm MDPE	AB



SYSTEM BREAKDOWN



THE POWER BEHIND THE PRODUCT

All Site Boost booster sets use industry leading DAB Divertron 900 M submersible pump(s) which are engineered for efficiency, making it the perfect choice. The pump is built from a range of synthetic and stainless steel materials.

This pump is professionally pre-installed in every Site Boost system purchased and comes in single or twin configuration.

The pump is a powerful and popular choice for home water booster sets, this makes it extremely easy to service and maintain.

It's high popularity also means that you can be sure you are using a tried and tested pump in your Site Boost system.

SPECIFICATIONS

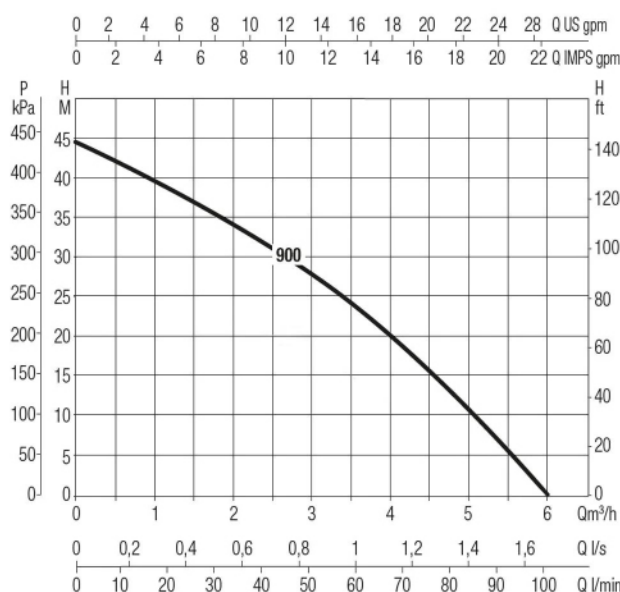
Description	Value
Voltage	230V
Input Power (W)	920 Watt
Input Power (HP)	1.3 hp
Current	4.8 A
Frequency	50 Hz
Engine Speed	2800 rpm
Protection Rating	IP68
Insulation Class	F
Noise Level	Silent
Max Temp of Liquid	35 °C
Cable Length	15 meters



PUMP FEATURES

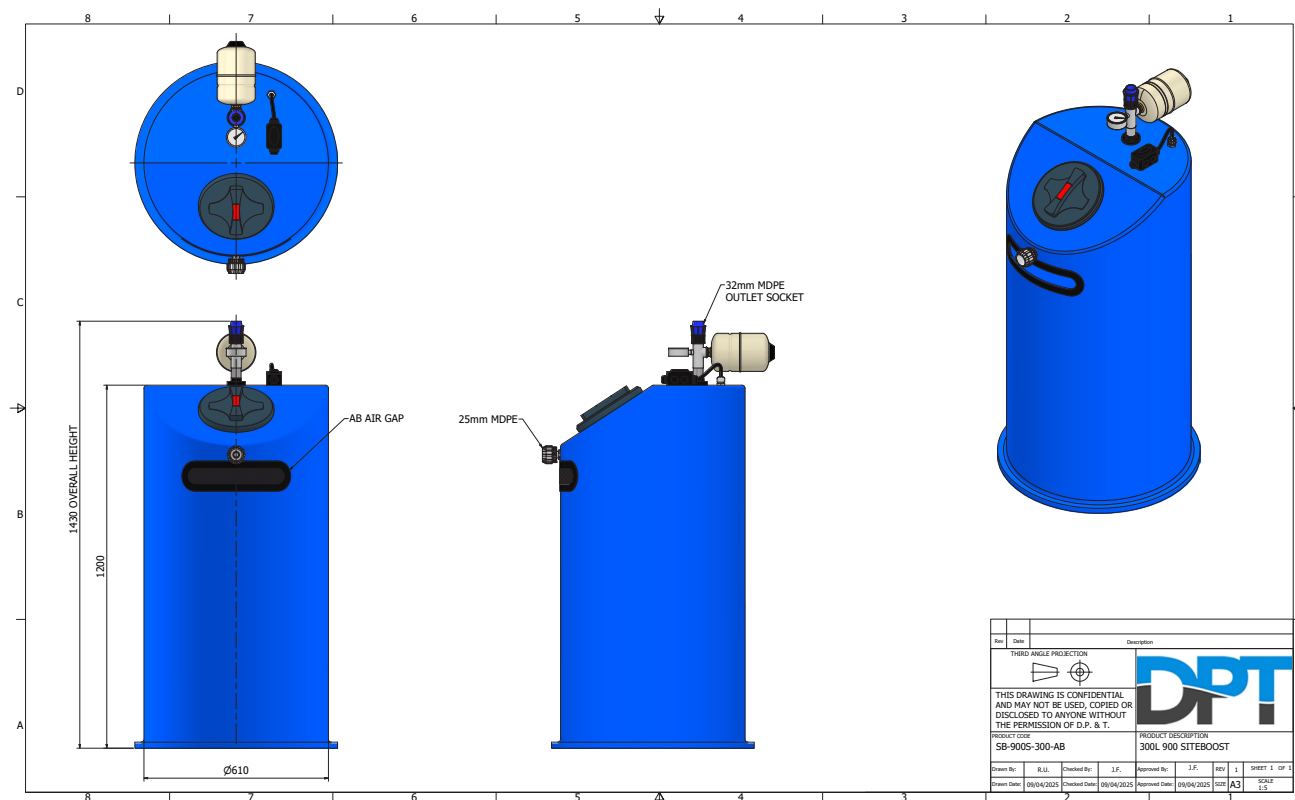
- Suitable for intensive use
- Internal pressure switch
- Dry run protection
- Overheating protection
- Pump up to 5,700 liters per hour
- Flow rate: from 1 m³/h to 5,4 m³/h
- Head up to: 45 m
- Maximum immersion depth: 12m
- Liquid temperature range: From 0°C to +35°C
- Maximum immersion depth: 15m
- Impeller/s material: Technopolymer
- Maximum number of starts: 20/h
- Protection class: IP 68

PUMP PERFORMANCE CURVE

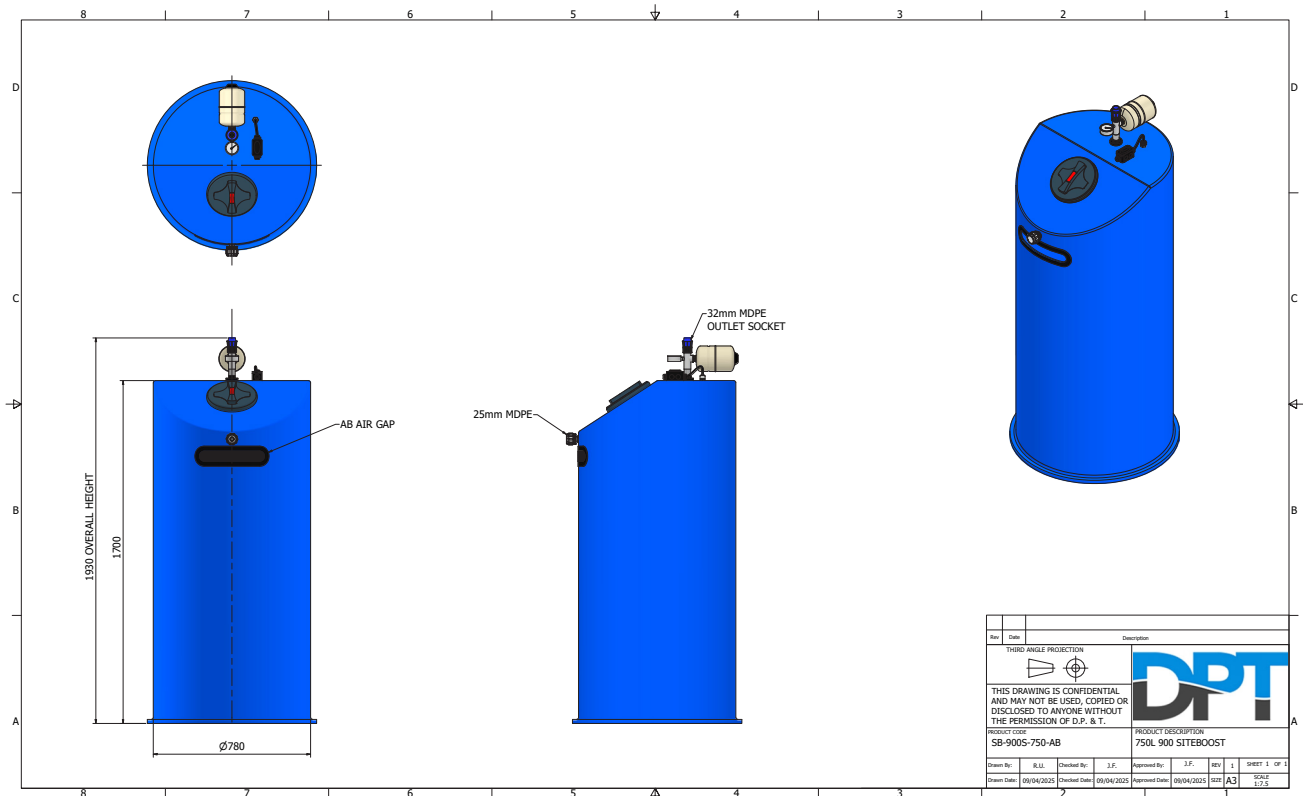
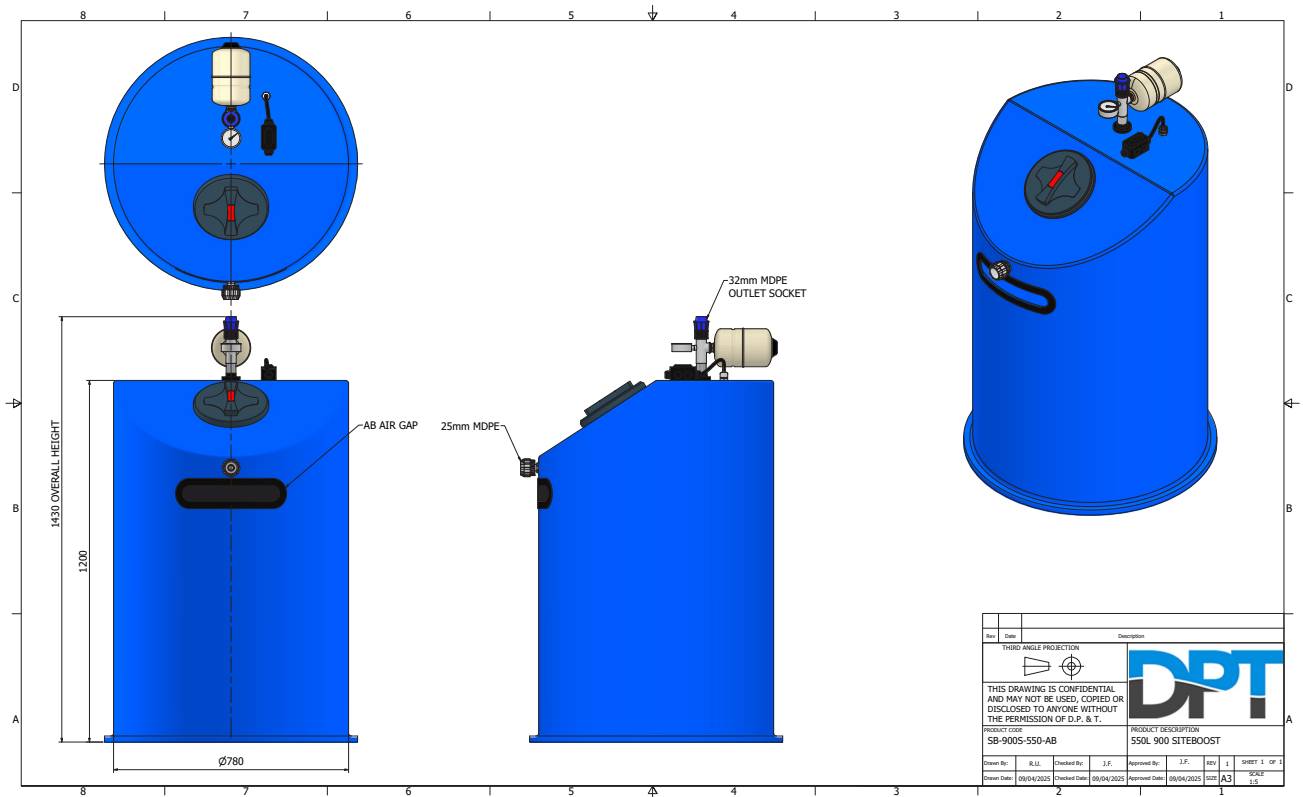


The performance curves are based on kinematic viscosity values = 1 mm²/s and density equivalent to 1000 kg/m³. Curve tolerance according to ISO 9906.

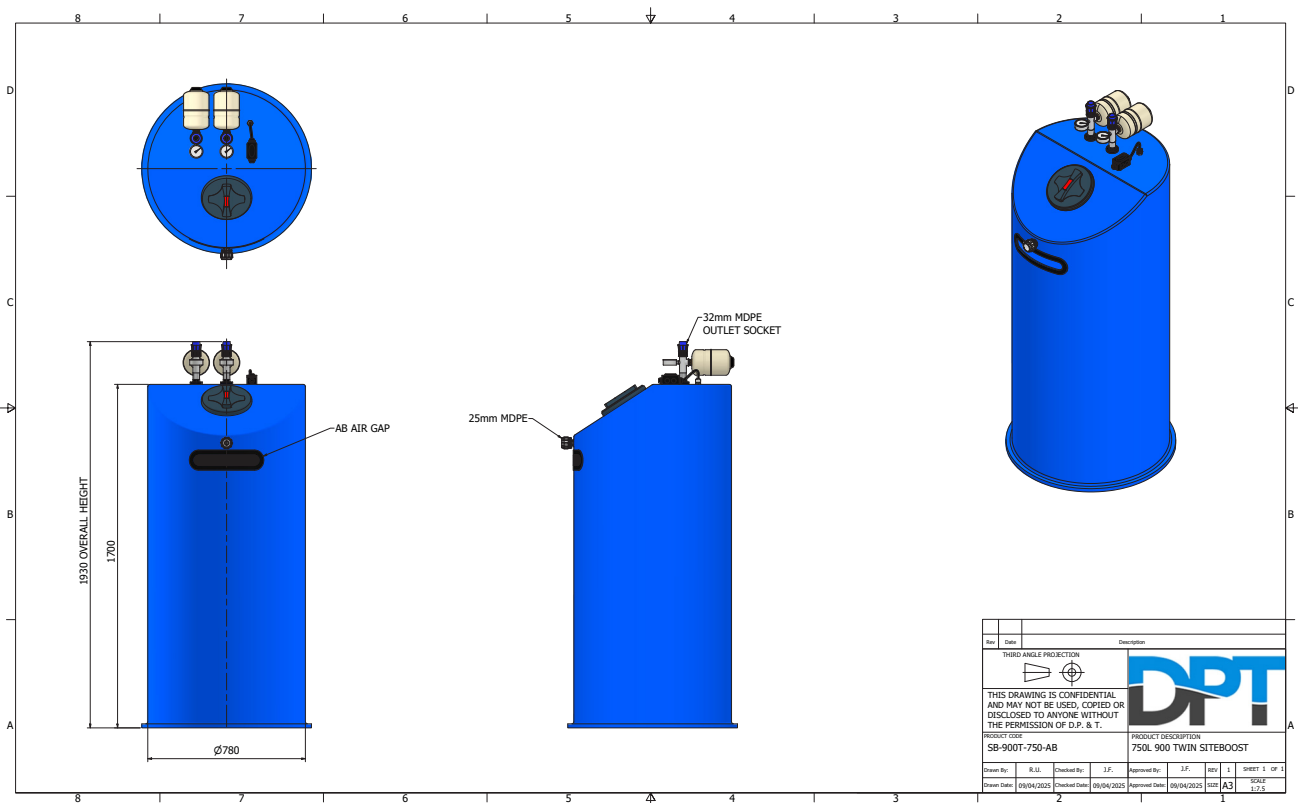
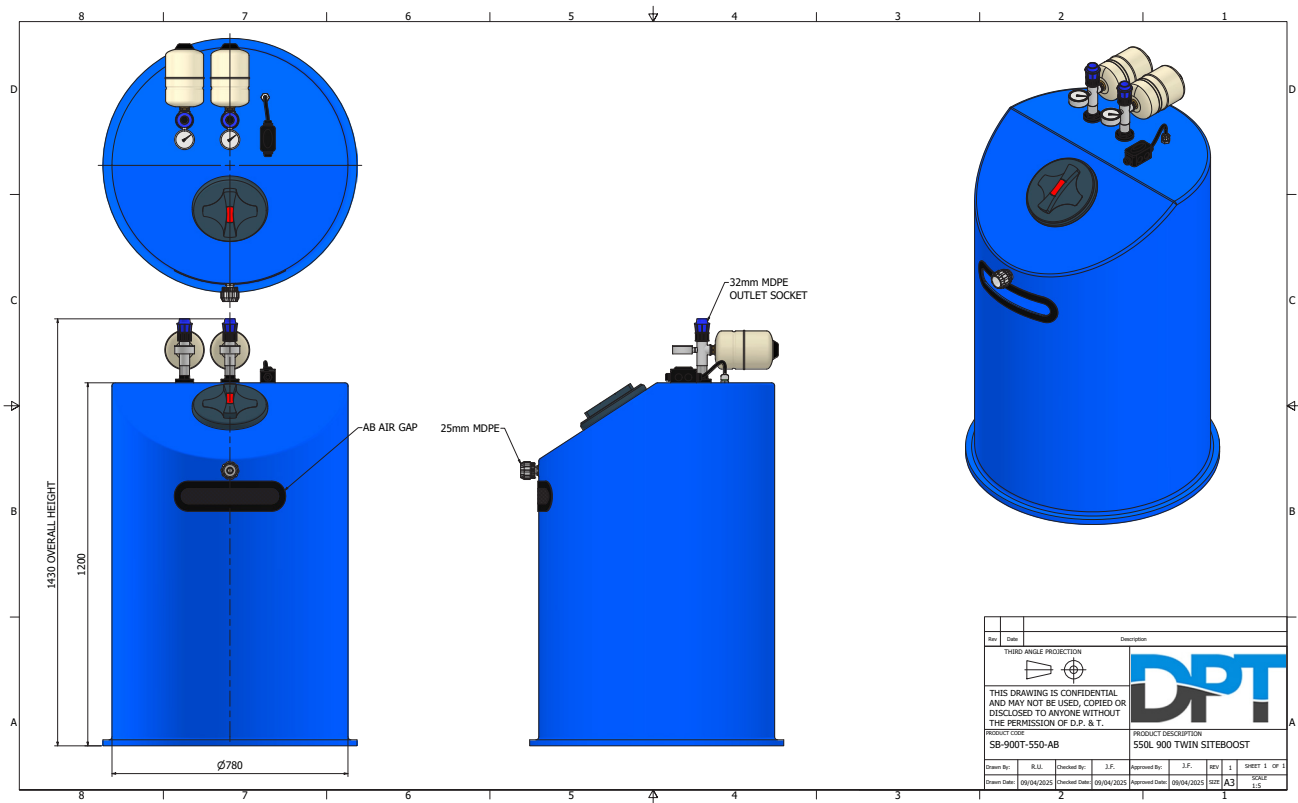




TECHNICAL DRAWINGS



TECHNICAL DRAWINGS





COMMISSIONING & SERVICING

Cold water booster sets require care and maintenance, that's why we offer unmatched support packages and commissioning to compliment your purchase.

- Commissioning
- Call outs
- Scheduled maintenance
- Chlorinations
- Service packages to suit requirements

WHY SERVICE YOUR BOOSTER SET?

An active service agreement vastly reduces the risk of equipment failing by ensuring that your cold water booster set is kept in working condition 24 hours a day.

Our team of highly experienced engineers can spot potential issues before they turn into a problem which could potentially damage your equipment which would lead to higher costs and disruption to your environment.

We'll always remind you when services are due and we'll make sure appointments are booked in well in advance to ensure our duty of care to the customer.

NATIONWIDE COVERAGE

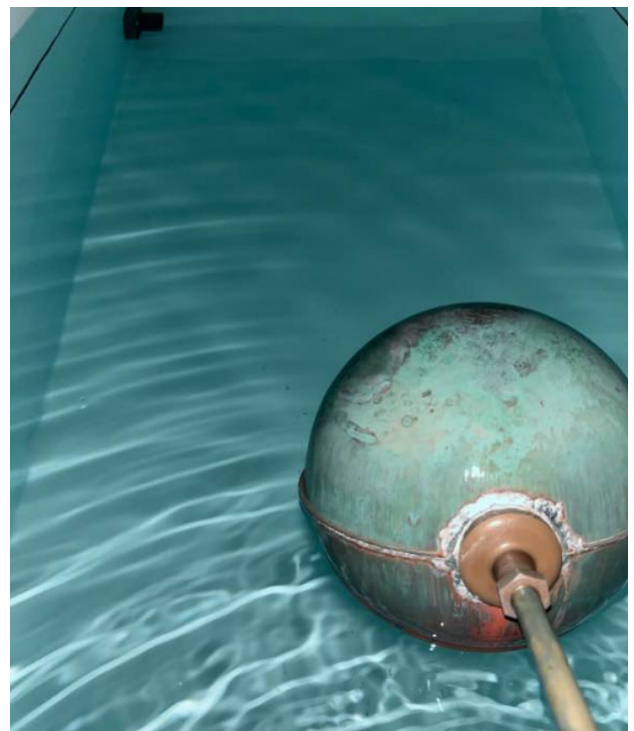
We cover the vast majority of British Isles, this means we have engineers in place to get on-site quickly with the skills required to service your equipment.

All of our engineers are expertly trained and have a wide range of industry leading certifications, so you can be sure that any work is undertaken by a registered professional. Each engineer carries a wide range of tools and replacements to get your system up and running as fast as possible.

COMMISSIONING

It is highly advised to have your new cold water booster set commissioned by a DPT engineer to guarantee the installation has been done correctly. During the commissioning visit a DPT engineer will carry out the following tasks:-

- Set pump parameters
- Electrical connections of pump
- System cycle and test
- Evaluation of installation
- Commissioning certificate upon completion



PLANNED MAINTENANCE

Regular maintenance of your cold water booster set is vital to ensure a long life, it is recommended that you have a yearly service of your equipment.

Each service will incorporate the following checks and adjustments:-

- A detailed inspection of mechanical components
- Full control system functionality check
- System adjustments where needed
- Visual inspection for leaks and operational issues
- Small remedial works where needed
- A full service report detailing all work

PRODUCT WARRANTY

DPT offers a full 1 year warranty on our products for a period of 12 months from the date of invoice.

Upon arrival, your cold booster set will come with a warranty card outlining all terms and conditions.

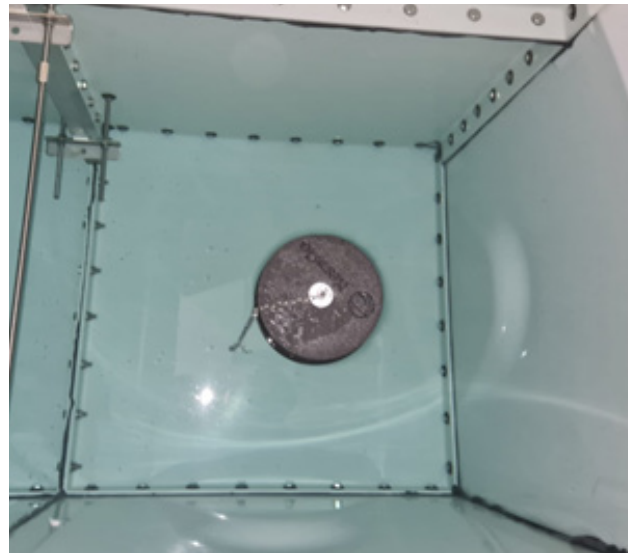
Extended warranties are available through service packages we can provide,

CHLORINATION

Water Utility companies will not allow connection of new water equipment onto their system until the system has been disinfected correctly.

We can provide services to issue certification of disinfection complying with local water authorities own specification to prevent the contamination of the water supply.

The external mains disinfection and chlorination is vital (and mandatory) to maintain the quality of the drinking water supply, this ensures that the water systems are safe to supply potable/wholesome water to outlets for drinking water and showers.



CONTACT DPT

If you would like to know more about this product, the services we offer, or have any questions, please contact us:-

SALES TEAM

0115 9444474 (Option 1)
enquiries@dpandt.co.uk

SERVICE TEAM

0115 9444474 (Option 3)
office@dpandtservices.co.uk

www.directpumpsandtanks.co.uk



DIRECTPUMPSANDTANKS.CO.UK