



# INSULATED POTABLE WATER TANKS



## INSULATED WATER TANKS

### PRODUCT OVERVIEW

The range of Insulated tanks from DPT have been designed specifically for storage of potable water. Each tank comes complete with a vented lid, inlet valve, and outlet valve which can be selected at the point of purchase.

The chamber is constructed from Thermosure, an advanced three-stage MDPE polymer providing fantastic insulation properties and an eco-friendly alternative to GRP.

The range of tanks are ideal for domestic and commercial developments such as houses, shops, apartments, offices, and more.



### CHAMBER SIZE GUIDE

Capacity (L)	Diameter (mm)	Height (mm)	Inlet	Outlet Options	Overflow	Vented Lid
200	610	820	1/2"	1", 1 1/4", 2"	22mm	6"
300	610	1200	1/2"	1", 1 1/4", 2"	22mm	6"
450	610	1700	1/2"	1", 1 1/4", 2"	22mm	6"
550	780	1200	1/2"	1", 1 1/4", 2"	22mm	6"
750	780	1700	1/2"	1", 1 1/4", 2"	22mm	6"
800	1000	1000	1/2"	1", 1 1/4", 2"	22mm	12"
1200	1000	1700	1/2"	1", 1 1/4", 2"	22mm	12"

### CHAMBER CAPACITY

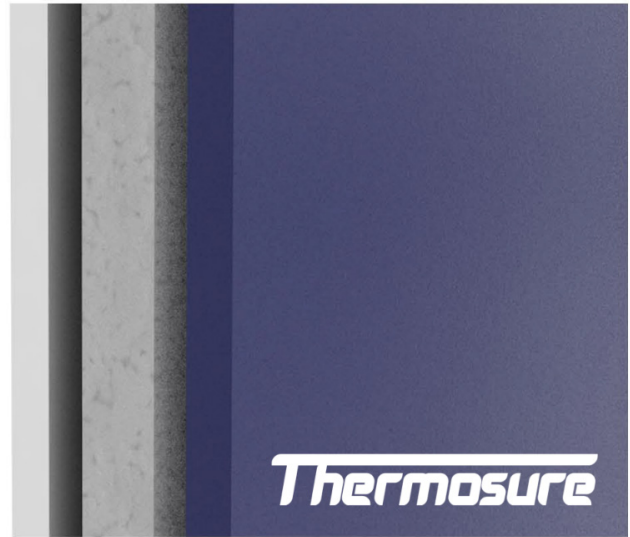
Capacity (L)	Nominal AG (L)	Actual AG (L)	Nominal AB (L)	Actual AB (L)
200	200	166	200	81.83
300	300	265.94	300	251.33
450	450	409.15	450	394.53
550	550	415.15	550	406.71
750	750	628.3	750	604.9
800	800	534.1	800	494.7
1200	1200	904.8	1200	785.39

## DPT THERMOSURE

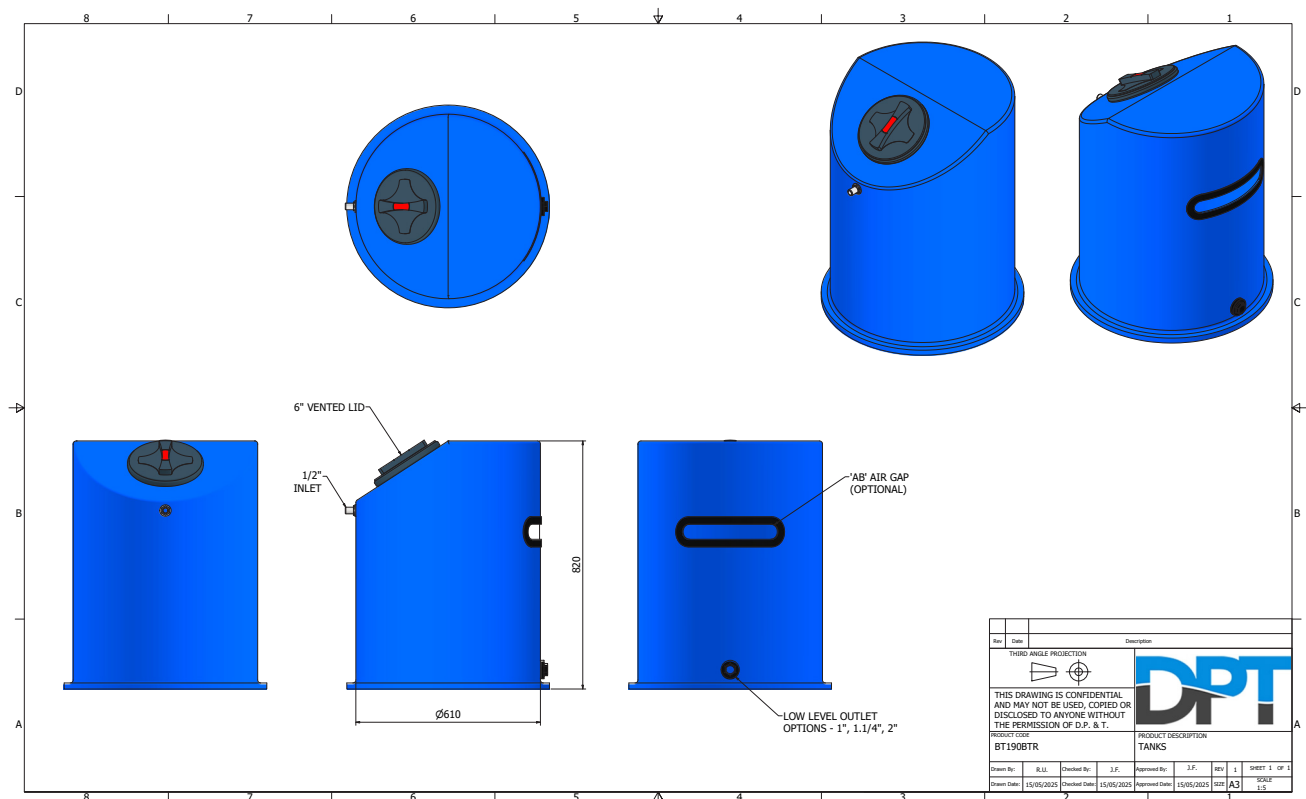
Thermosure is an advanced thermo-retentive material comprised of multiple polymers that are bonded together during the moulding process.

Thermosure has been thoroughly tested under strict real-world conditions as well as computer simulations to ensure liquids remain resistant to excessive heat and cold temperatures.

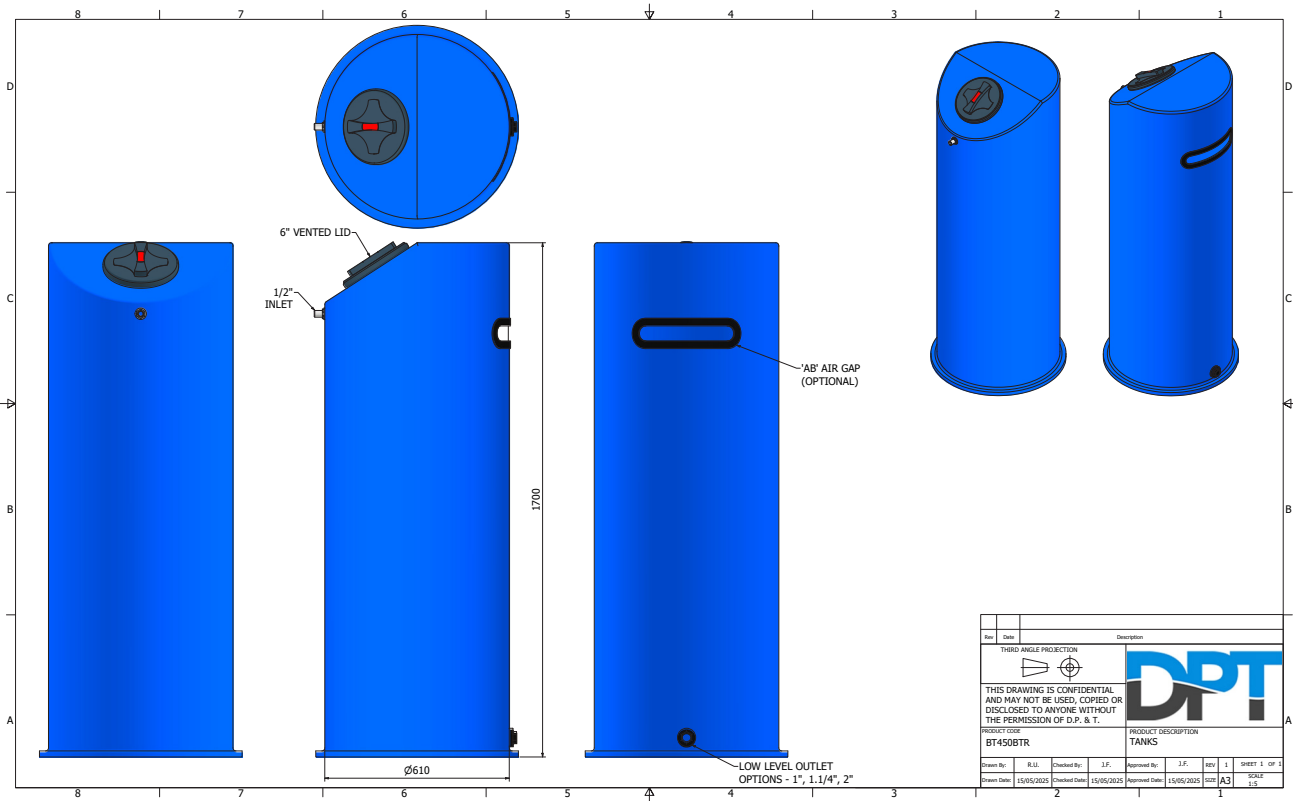
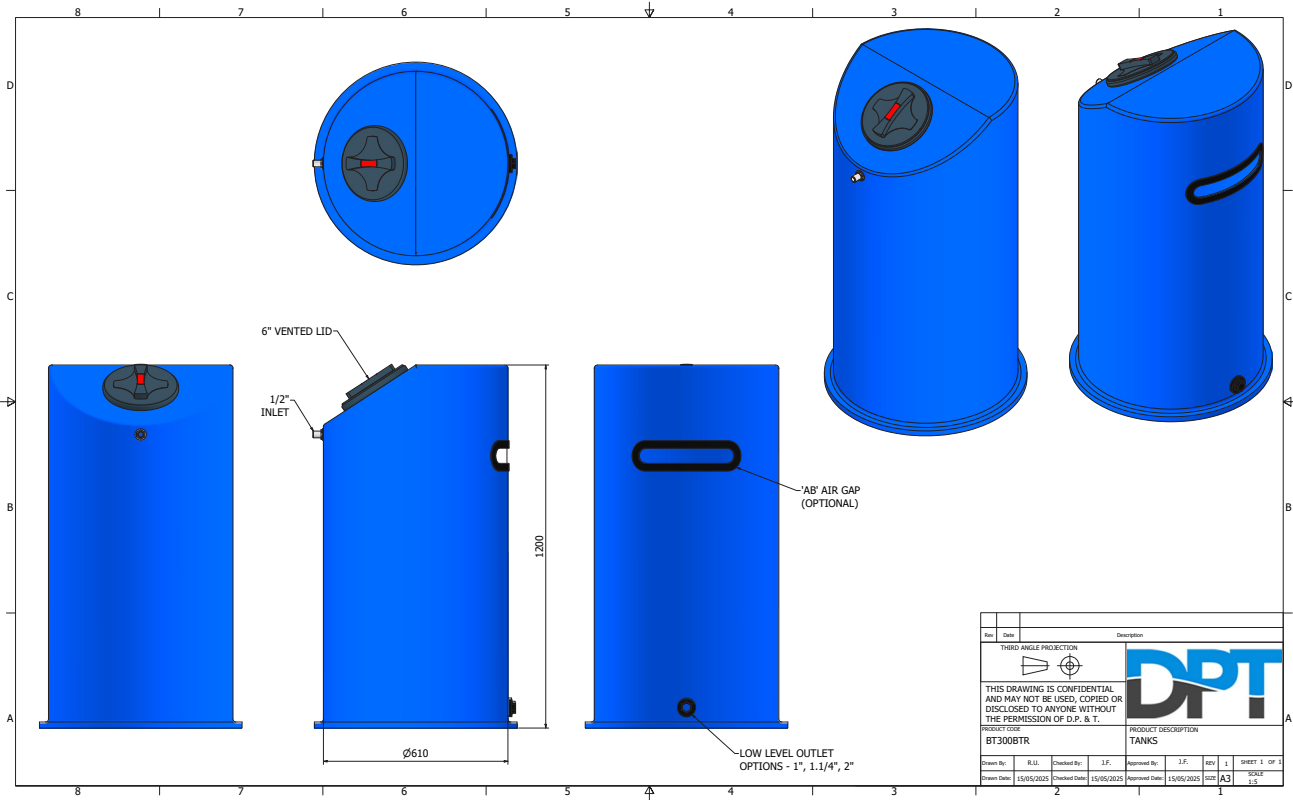
We are the only company in the U.K. to offer this advanced insulated material to form a complete insulated MDPE potable water tank.



## TECHNICAL DRAWINGS



PRODUCT DRAWINGS





PRODUCT DRAWINGS

