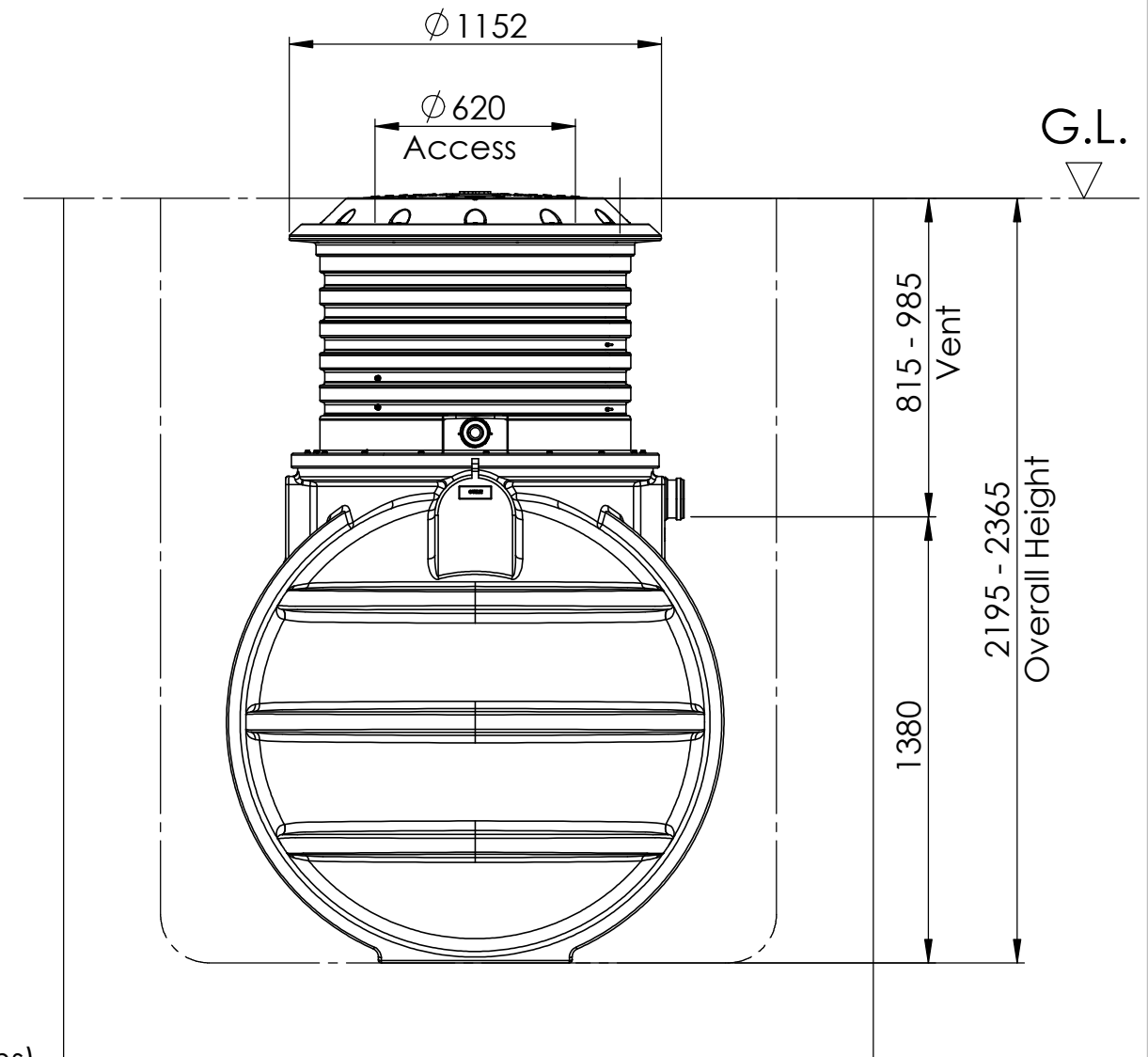


Notes :

1. Inlet is Ø110mm. Suitable reducers should be used to step down from bigger pipework. Supplied by others.
2. OUTLET is Ø50mm outside diameter MDPE compression fitting.
3. Units invert is adjustable by trimming external riser to required height. Selection of correct invert is key and must be suitable for drainage and ground levels on site.
4. Ext neck kit available for deeper inverts up to a maximum invert of 1400mm. See extension neck drawing for assembly details.
5. It is important to read and understand installation operation and maintenance guidelines before attempting to install this unit.
6. Vent pipe connection is supplied but vent runs and stacks are supplied by others.
7. Air hose for tank internals is supplied with blower housing and is run through the vent.
8. Cable for the outlet pump is run through the vent.
9. Tank Weight (Empty) - 185 kg
10. Rodding point supplied by others. This needs to be finished at ground level. Standard 4" (Ø110 mm) drainage pipe and cap supplied by others.



Please check with Klargester for the latest Issue of the drawing				
Issue	Date	Drawn By	Approved By	Description
06	13/06/2025	D.Musvaburi	D.M	ECN 2214 - Capping the Ø200 stilling pipe on BioTec+
05	14/04/2025	D. Musvaburi	D.M	ECN 2170 - Adaptor added

LN Number : 1014156
 Finish :
 Weight :
 Modelled By :

Tolerance (unless stated) :
 Thickness :
 Surface Area : m²
 Material :

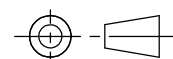
Drawing : DS1474P

Page 1 of 1

BioTec+ 2 - Pumped Outlet

All Dimensions In mm

Scale: Do Not Scale



Third Angle Projection

A:\Wastewater\Engineering\Drawing Data\02 - Sales Drawings\DS\DS - 14\DS1474P

Kingspan Water & Energy reserve the right to alter the details of this drawing without prior notice. This drawing is copyright and may not be reproduced or used without the written permission of Kingspan Water & Energy

