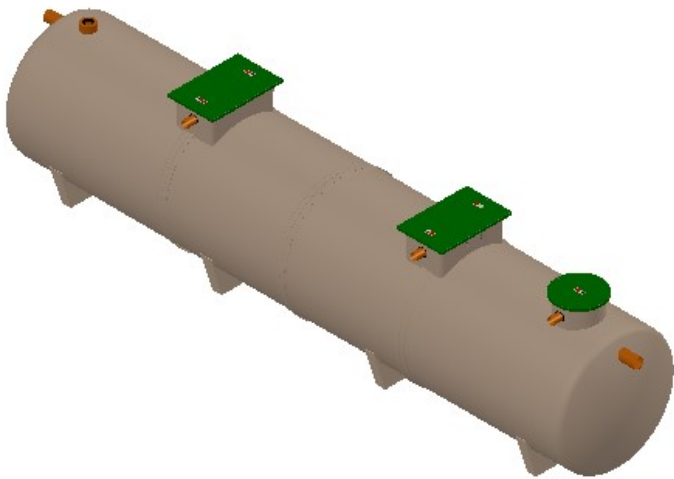
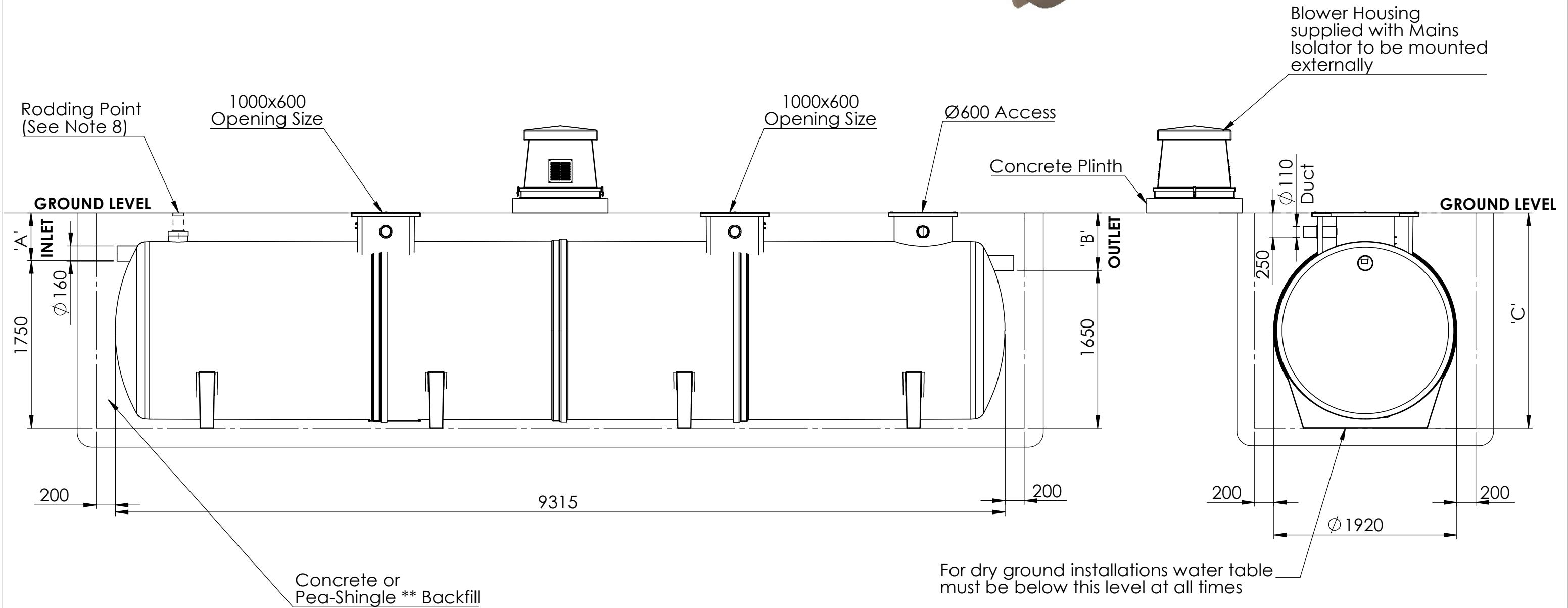


Notes:

- 1. This drawing is for 'Dimensional information Only', it is essential that this drawing is read in conjunction with the 'Installation Guidelines' supplied with the unit. (Copies available from our Sales Department)
- 2. Inlet and Outlet pipes are Ø160mm PVCu.
- 3. Extension neck kit is available for deep inverts up to a maximum invert of 2000mm. See extension neck drawing for assembly details.
- 4. Vent pipe connection is supplied but vent runs and stacks are supplied by others.
- 5. Air hose for tank internals is supplied with blower housing and is run through the vent.
- 6. All covers are Non-pedestrian duty
- 7. \*\*Pea -shingle backfill is reliant on use of correct strapping and anchoring.
- 8. Rodding point supplied by others. This needs to be finished at ground level. Standard 4" (Ø110 mm) drainage pipe and cap supplied by others.



| Unit Ref | 'A'<br>(mm) | 'B'<br>(mm) | 'C'<br>(mm) | Unit Weight<br>(Kg) |
|----------|-------------|-------------|-------------|---------------------|
| BTX9     | 500         | 600         | 2250        | 890                 |
|          | 1000        | 1100        | 2750        | 930                 |
|          | 1500        | 1600        | 3250        | 970                 |
|          | 2000        | 2100        | 3750        | 1010                |



| Please check with Kingspan Water & Energy for the latest Issue of the drawing |            |             |             |  |
|---|------------|-------------|-------------|--|
| Issue   | Date       | Drawn By    | Approved By | Description  |
| 03  | 27/06/2025 | D.Musvaburi | D.M         | ECN 2214 - Capping the Ø200 stilling pipe on BioTec+ |
| 02  | 24/01/2025 | D.Musvaburi | D.M         | ECN 2169 - Note 8 amended                            |
| 01  | 29/11/2024 | TGY         |             | Initial Issue  |

Modelled By :  
Weight : kg  
Material :

Tolerance (unless stated) :  
Thickness :  
Surface Area : m²

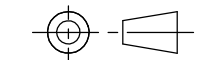
Drawing : DS1495P

Page 1 of 1

BioTec+ 9 (50 PE) Gravity Sales Drawing

All Dimensions In mm

Scale: Do Not Scale



Third Angle Projection

A:\Wastewater\Engineering\Drawing Data\02 - Sales Drawings\DS\DS - 14\DS1495P

Kingspan Water & Energy reserve the right to alter the details of this drawing without prior notice. This drawing is copyright and may not be reproduced or used without the written permission of Kingspan Water & Energy

