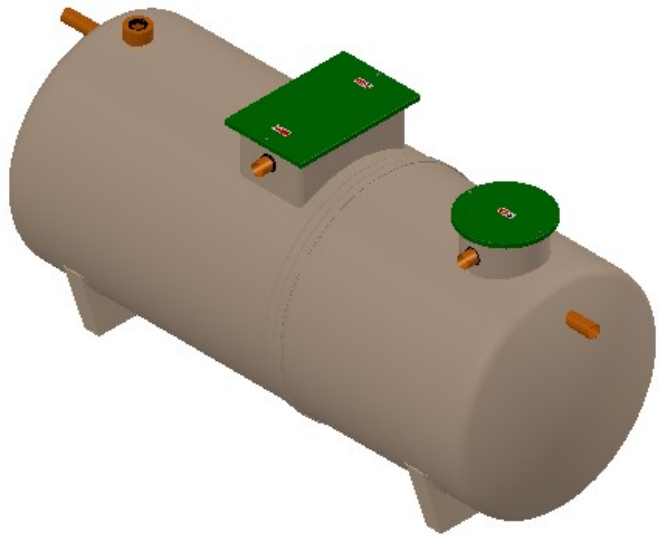
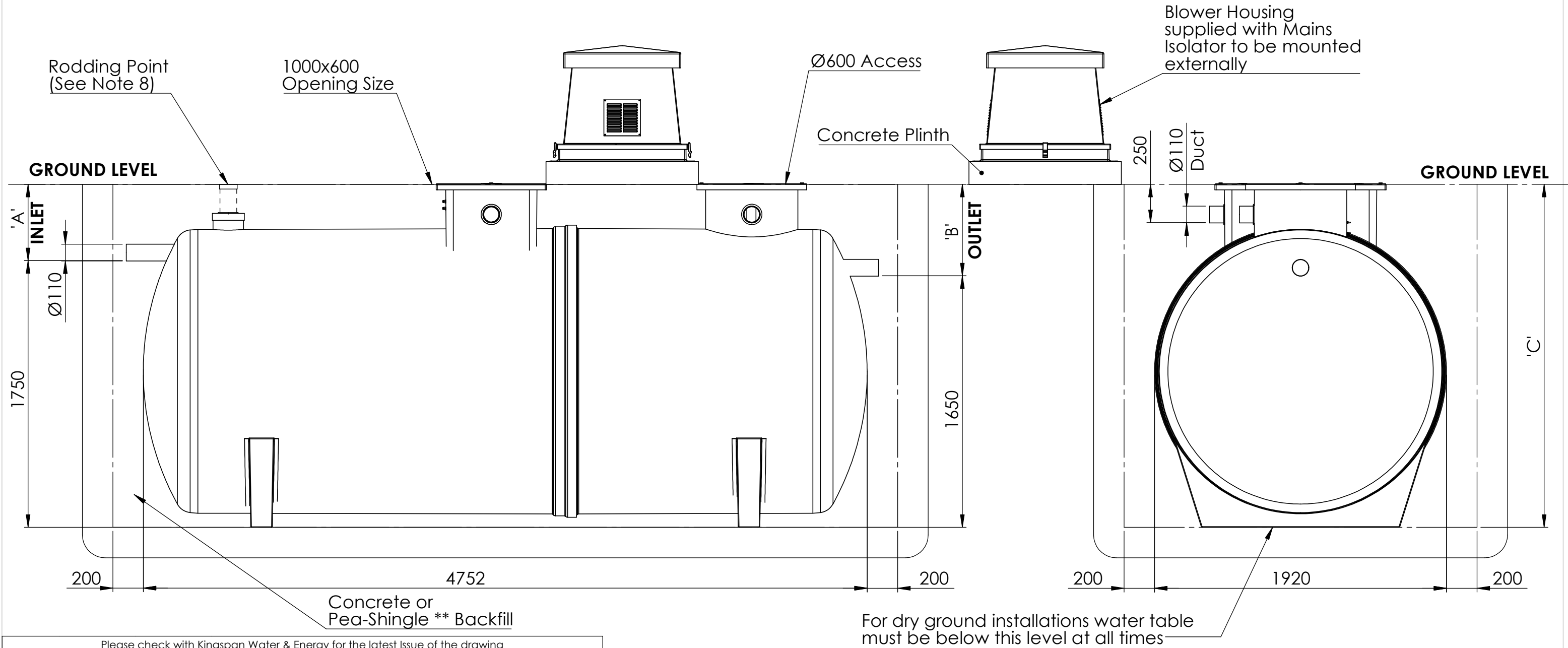


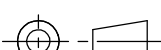
Notes:

- 1. This drawing is for 'Dimensional information Only', it is essential that this drawing is read in conjunction with the 'Installation Guidelines' supplied with the unit. (Copies available from our Sales Department)
- 2. Inlet and Outlet pipes are Ø110mm PVCu.
- 3. Extension neck kit is available for deep inverts up to a maximum invert of 2000mm. See extension neck drawing for assembly details.
- 4. Vent pipe connection is supplied but vent runs and stacks are supplied by others.
- 5. Air hose for tank internals is supplied with blower housing and is run through the vent.
- 6. All covers are Non-pedestrian duty
- 7. **Pea -shingle backfill is reliant on use of correct strapping and anchoring.
- 8. Rodding point supplied by others. This needs to be finished at ground level. Standard 4" (Ø110 mm) drainage pipe and cap supplied by others.



Unit Ref	'A' (mm)	'B' (mm)	'C' (mm)	Unit Weight (Kg)
BTX7	500	600	2250	460
	1000	1100	2750	485
	1500	1600	3250	510
	2000	2100	3750	535



Please check with Kingspan Water & Energy for the latest Issue of the drawing				
Issue	Date	Drawn By	Approved By	Description
03	27/06/2025	D.Musvaburi	D.M	ECN 2214 - Capping the Ø200 stilling pipe on BioTec+
02	27/01/2025	D.Musvaburi	D.M	ECN 2169 - Note 8 amended
All Dimensions In mm		Scale: Do Not Scale		<div> Third Angle Projection</div>
A:\Wastewater\Engineering\Drawing Data\02 - Sales Drawings\DS\DS - 14\DS1497P				

Modelled By :	Tolerance (unless stated) :
Weight : kg	Thickness :
Material :	Surface Area : m²

Drawing : DS1497P	Page 1 of 1
BioTec+ 7 (25 PE) Gravity Sales Drawing	

Kingspan Water & Energy reserve the right to alter the details of this drawing without prior notice. This drawing is copyright and may not be reproduced or used without the written permission of Kingspan Water & Energy

