



WATER BOOST LITE



WATER BOOST LITE APPLICATIONS

**Suitable domestic and commercial
cold water boosting applications
where space is limited.**

- Residential properties**
- Commercial buildings**
- Industrial properties**
- Wash-down areas**

PRODUCT OVERVIEW

The Water Boost Lite booster set is designed to be a high-performance solution that is available in single pump configuration.

The DAB Easybox pump is paired with an MDPE chamber which is available in three different sizes.

Each pump is packed with advanced features such as fault signals, error code displays, and is able to be connected to the DAB digital app.

The system comes with all connectors needed to connect the pump sytem to the chamber, this makes installation quick and simple in any project application.

KEY FEATURES

The Water Boost Lite system comes with a range of advanced features and technology:-

- HDPE KUKREG4 approved chamber
- DAB Esybox Mini3 variable speed pump
- Flow rate of 80 l/m (Q Max)
- Head pressure of up to 5 bar
- Easy setup and installation
- Ultra low noise
- Digital display
- High efficiency motors
- No vibrations

CHAMBER SIZE GUIDE

Capacity	Pump Arrangement	Diameter (mm)	Height (mm)	Outlet (Single)	Overflow
200	Single	610	820	1" BSP	22mm
300	Single	610	1200	1" BSP	22mm
550	Single	780	1200	1" BSP	22mm



SYSTEM BREAKDOWN

HDPE CHAMBER

OVERFLOW CONNECTIONS

EASY CONNECTION

DAB ESYBOX MINI PUMP



THE POWER BEHIND THE PRODUCT

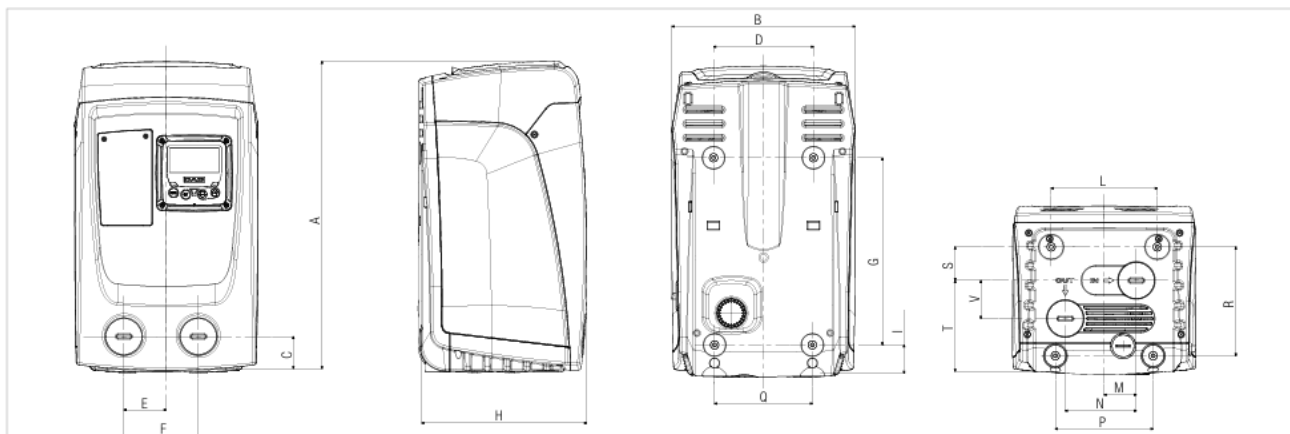
The DAB ESYBOX booster is a compact and cost-effective cold water booster set that is ideal for residential and light commercial installations.

The DAB ESYBOX system comprises of a single multi-stage pump and variable speed frequency inverter with intuitive LCD interface.

The system includes a range of advanced features such as fault signals and an error code display as standard

PRODUCT FEATURES

- Flow rate of up to 80 l/m
- Head pressure of up to 5 bar
- Dry run protection
- Advanced variable speed inverter
- Ultra low noise
- Digital display
- High efficiency motors
- No vibrations

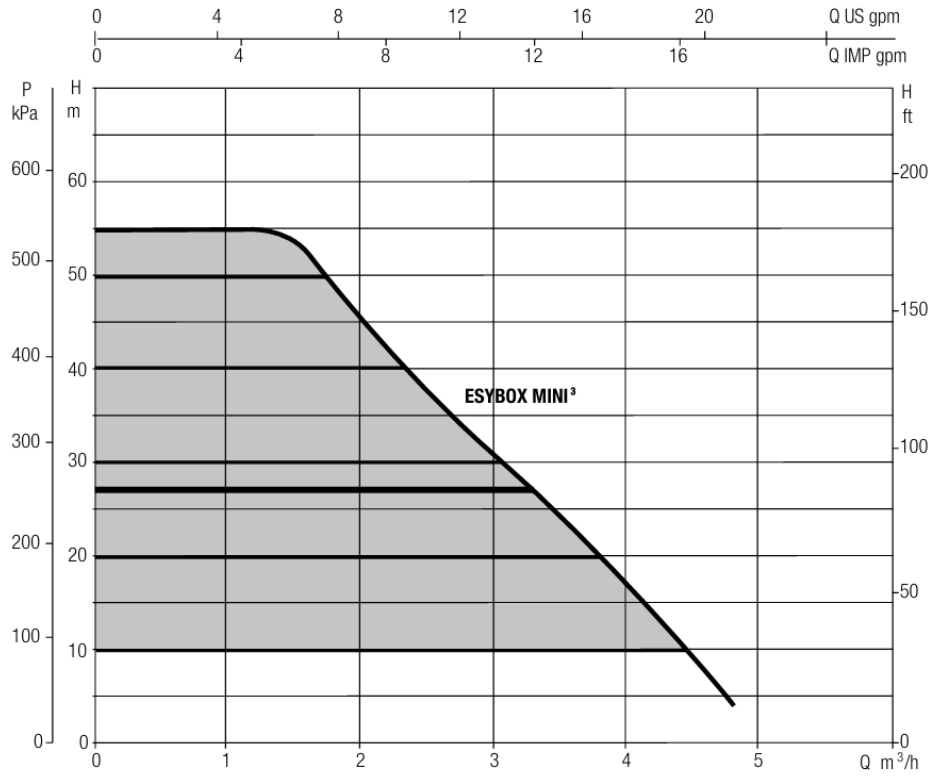


MODEL	Q=m ³ /h	0	0,6	1,2	1,8	2,4	3	3,6	4,2	4,8	5,4	6	6,6	7,2
	Q=l/min	0	10	20	30	40	50	60	70	80	90	100	110	120
ESYBOX MINI ³	H (m)	55	55	55	49	39	31	23	14	4				

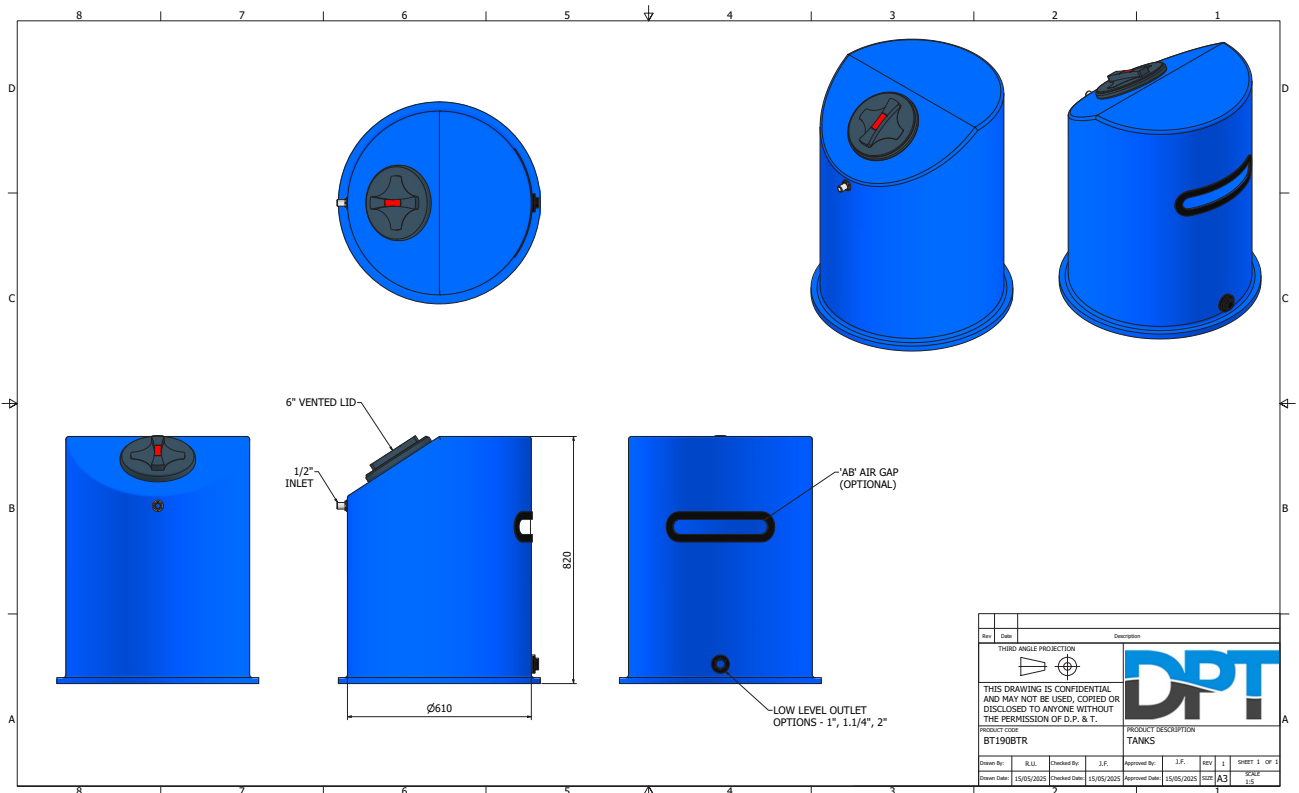
MODEL	ELECTRICAL DATA				
	N° IMPELLER	POWER INPUT 50/60 Hz	P1 MAX		In A
			kW	HP	
ESYBOX MINI ³	3	1x220-240 V ~	0,85	1,1	4,8

MODEL	A	B	C	D	E	F	G	H	I	L	M	N	P	Q	R	S	T	V	DNA	DNM	PACKING DIMENSIONS			WEIGHT Kg
																					L/A	L/B	H	
ESYBOX MINI ³	439	263	46	143	60,7	106,7	279,5	236	40,5	152	46	101,7	140	140	155,5	47,8	133	54,5	1"	1"	300	500	320	14,6

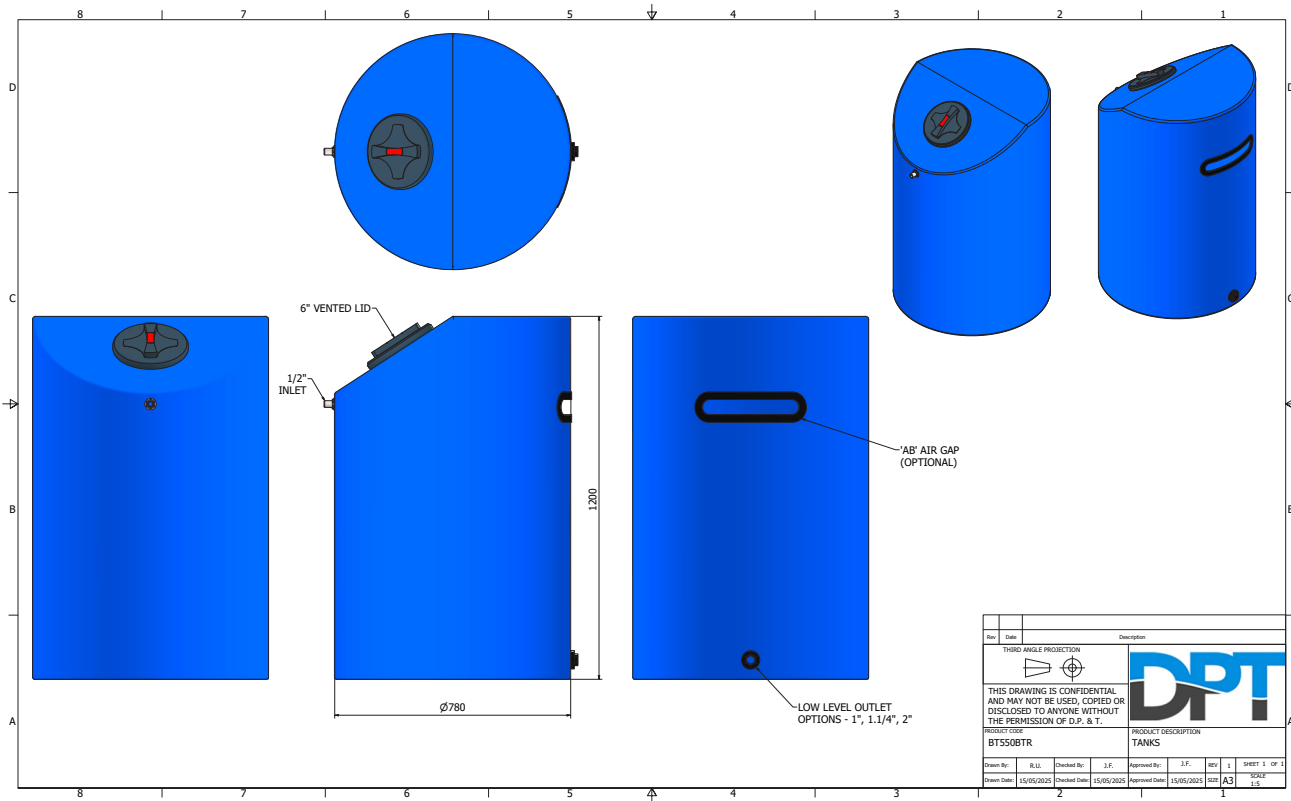
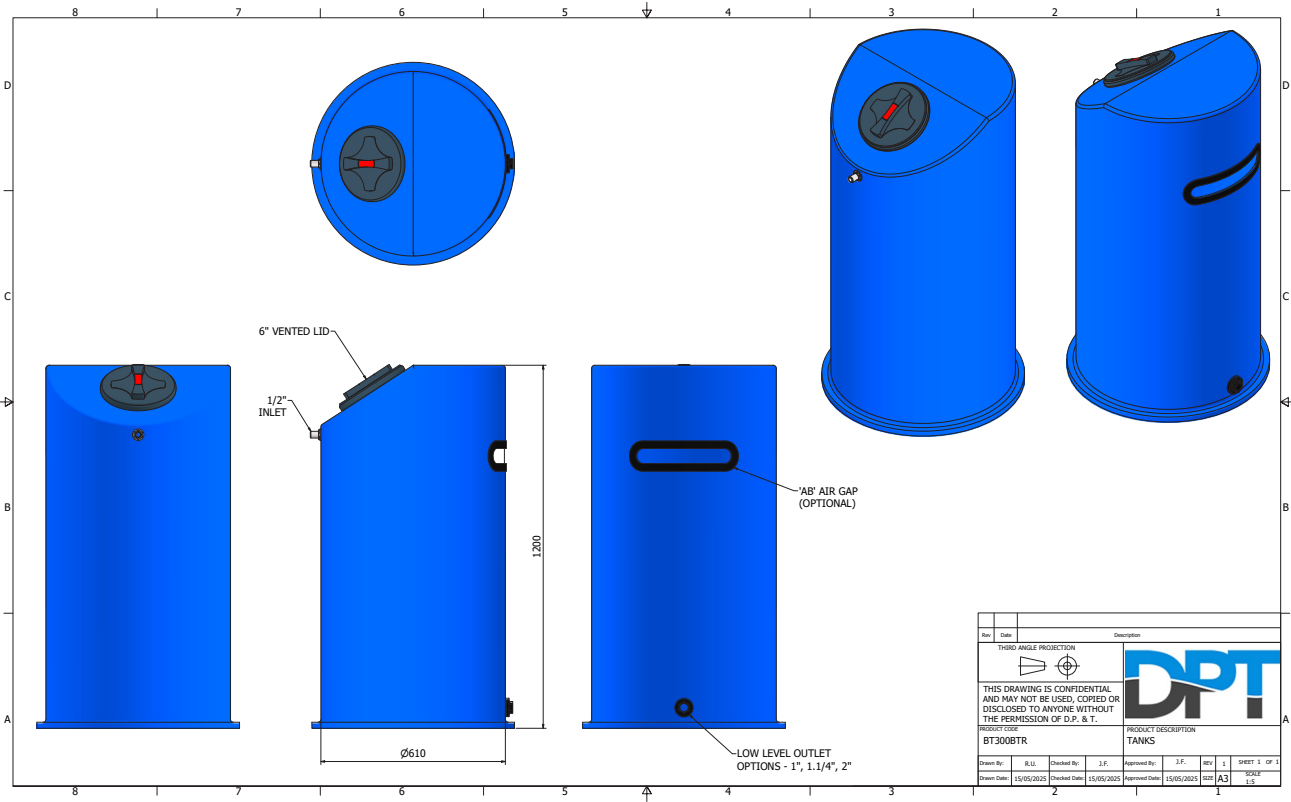
PUMP CURVES



TECHNICAL DRAWINGS



TECHNICAL DRAWINGS





COMMISSIONING & SERVICING

Cold water booster sets require care and maintenance, that's why we offer unmatched support packages and commissioning to compliment your purchase.

- Commissioning
- Call outs
- Scheduled maintenance
- Chlorinations
- Service packages to suit requirements

WHY SERVICE YOUR BOOSTER SET?

An active service agreement vastly reduces the risk of equipment failing by ensuring that your cold water booster set is kept in working condition 24 hours a day.

Our team of highly experienced engineers can spot potential issues before they turn into a problem which could potentially damage your equipment which would lead to higher costs and disruption to your environment.

We'll always remind you when services are due and we'll make sure appointments are booked in well in advance to ensure our duty of care to the customer.

NATIONWIDE COVERAGE

We cover the vast majority of British Isles, this means we have engineers in place to get on-site quickly with the skills required to service your equipment.

All of our engineers are expertly trained and have a wide range of industry leading certifications, so you can be sure that any work is undertaken by a registered professional. Each engineer carries a wide range of tools and replacements to get your system up and running as fast as possible.

COMMISSIONING

It is highly advised to have your new cold water booster set commissioned by a DPT engineer to guarantee the installation has been done correctly. During the commissioning visit a DPT engineer will carry out the following tasks:-

- Set pump parameters
- Electrical connections of pump
- System cycle and test
- Evaluation of installation
- Commissioning certificate upon completion



PLANNED MAINTENANCE

Regular maintenance of your cold water booster set is vital to ensure a long life, it is recommended that you have a yearly service of your equipment.

Each service will incorporate the following checks and adjustments:-

- A detailed inspection of mechanical components
- Full control system functionality check
- System adjustments where needed
- Visual inspection for leaks and operational issues
- Small remedial works where needed
- A full service report detailing all work

PRODUCT WARRANTY

DPT offers a full 1 year warranty on our products for a period of 12 months from the date of invoice.

Upon arrival, your cold booster set will come with a warranty card outlining all terms and conditions.

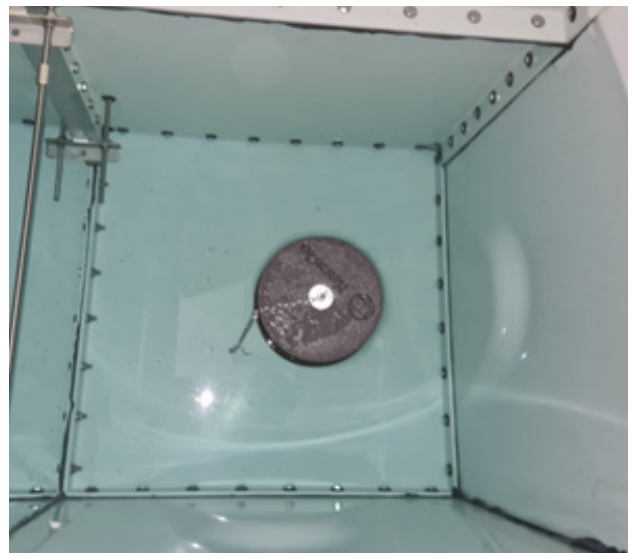
Extended warranties are available through service packages we can provide,

CHLORINATION

Water Utility companies will not allow connection of new water equipment onto their system until the system has been disinfected correctly.

We can provide services to issue certification of disinfection complying with local water authorities own specification to prevent the contamination of the water supply.

The external mains disinfection and chlorination is vital (and mandatory) to maintain the quality of the drinking water supply, this ensures that the water systems are safe to supply potable/wholesome water to outlets for drinking water and showers.



CONTACT DPT

If you would like to know more about this product, the services we offer, or have any questions, please contact us:-

SALES TEAM

0115 9444474 (Option 1)
enquiries@dpandt.co.uk

SERVICE TEAM

0115 9444474 (Option 3)
office@dpandtservices.co.uk

www.directpumpsandtanks.co.uk



DIRECTPUMPSANDTANKS.CO.UK