

THE ARC BOOSTER SET

(FEATURING GRUNDFOS PUMPS)



ARC BOOSTER SET APPLICATIONS

**Designed for cold water boosting in a
variety of applications**

- Commercial Sites
- Multiple Residential Properties
- Industrial Sites
- Agricultural & Farming
- Manufacturing

PRODUCT OVERVIEW

The ARC cold water booster set is designed to be a high-performance solution that is available in twin, and triple pump configuration.

The system comes with intuitive variable speed frequency inverters mounted inside the ARC Panel to allow for BMS connectivity.

The ARC Grundfos is fully WRAS and approved to meet U.K. REG4 guidelines.

The system includes advanced features such as fault signals, error code displays, and a range of BMS connections along with a full colour 7" touch screen display.

PRODUCT FEATURES

- Flow rate of up to 495 L/m (mid-curve)
- Head pressure of up to 6 bar
- Twin, or triple pump options
- Fully WRAS approved
- Air-cooled variable speed inverter(s)
- 7 inch touch screen colour LCD display
- High efficiency motors
- BMS volt free contacts

SYSTEM RANGE PERFORMANCE

Pump Configuration	Twin, and Triple
Flow Range (Mid-curve)	84 - 495 L/m
Pressure Range	3.8 - 6.0 bar
Max System Pressure	9.0 bar
Inverter Type	Panel-mounted
Max System Temp	40 °C

CERTIFICATIONS

Each ARC system conforms to the latest U.K. standards set by the water regulation authority and is fully WRAS approved.



OPTIONAL COMPONENTS

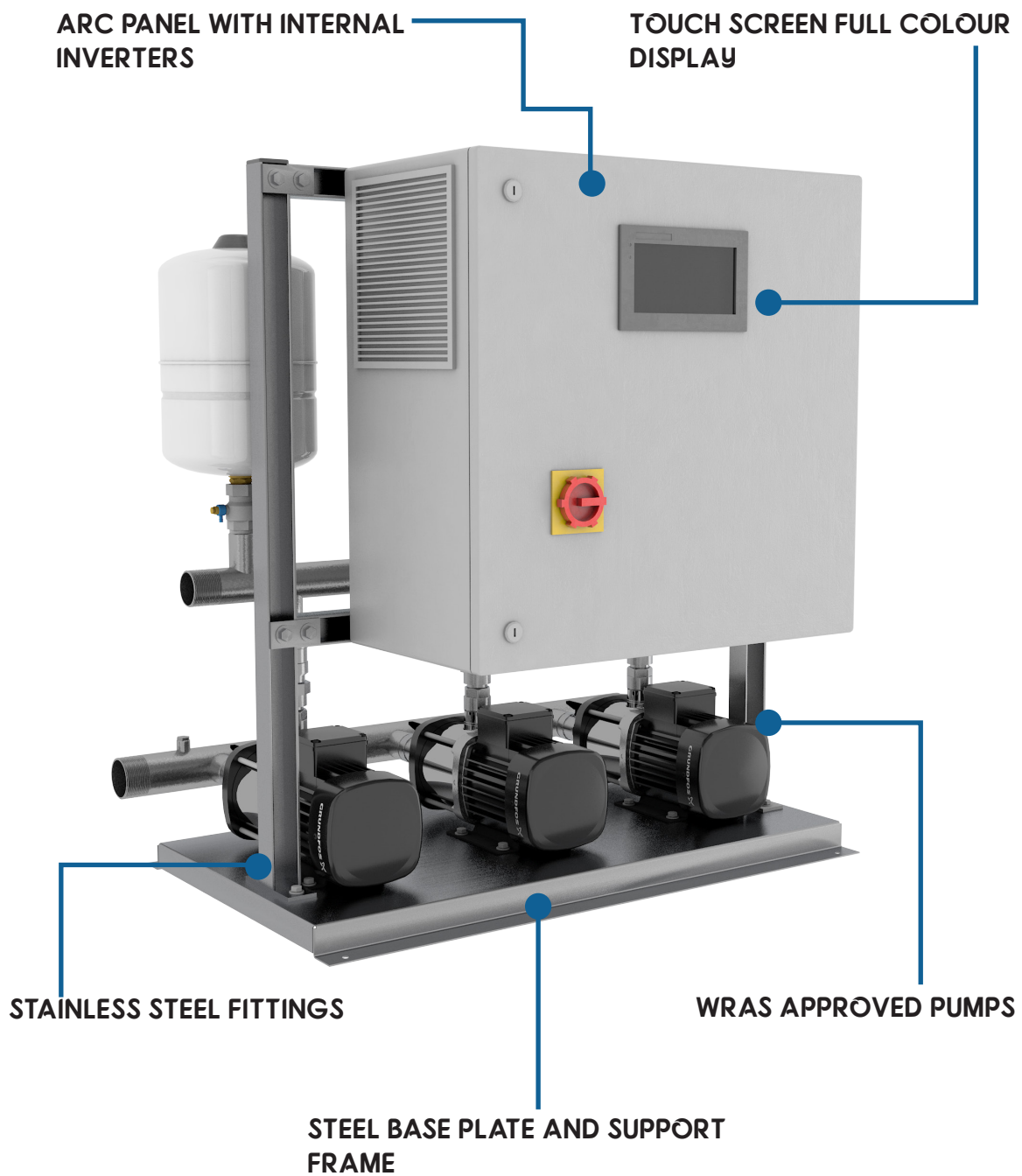
We provide a range of optional equipment that can be paired with your Vari-RS booster set: -

- WRAS approved GRP water chambers
- MDPE water chambers
- Professional control panels
- Anti-vibration feet
- Pipework and fittings
- Backup parts and materials
- GRP pump enclosures
- Combination units
- Commissioning and Service

DELIVERY & AVAILABILITY

The ARC twin booster set can be delivered in as little as 48 hours. This is a stocked product and as such, are always available at short notice.

SYSTEM OVERVIEW AT A GLANCE



TWIN ARC GRUNDFOS BOOSTER SET

The Twin ARC booster set is a compact and cost-effective cold water booster set that is ideal for residential and light commercial installations.

The DPT Twin ARC booster system features dual horizontally mounted multi-stage pumps and air-cooled variable speed frequency inverters with intuitive interface.

The system includes a range of advanced features such as fault signals and an error code display as standard

PRODUCT FEATURES

- Flow rate of up to 320 L/m (mid-curve)
- Head pressure of up to 7 bar
- Fully WRAS approved
- Dry run protection
- Advanced variable speed inverters
- Glycerine filled pressure gauge
- Stainless steel fittings
- In-stock - immediate delivery



SPECIFICATIONS

Model Ref	Mid-Curve Duty		DN1	DN2	Power Supply	kW	HP	FLC
	(Flow L/m)	Pressure (bar)						
2RS3-5/8/GF/ARC	84	3.8	2"	1½"	2x240v	2x0.6	2x0.8	2x1.5
2RS3-7/8/GF/ARC	84	5.5	2"	1½"	2x240v	2x1.1	2x1.4	2x2.6
2RS5-5/8/GF/ARC	132	4.2	2"	1½"	2x240v	2x1.1	2x1.4	2x2.6
2RS5-7/8/GF/ARC	132	6.5	2"	1½"	2x240v	2x2.2	2x2.9	2x3.3
2RS10-3/8/GF/ARC	330	3.8	2 ½"	2"	2x240v	2x2.2	2x2.9	2x4.6

TRIPLE ARC GRUNDFOS BOOSTER SET

The Triple ARC booster set is a compact and cost-effective cold water booster set that is ideal for residential and light commercial installations.

The Triple ARC system features three horizontal mounted multi-stage pumps and three air-cooled variable speed frequency inverters with intuitive interface.

The system includes a range of advanced features such as fault signals and an error code display as standard

PRODUCT FEATURES

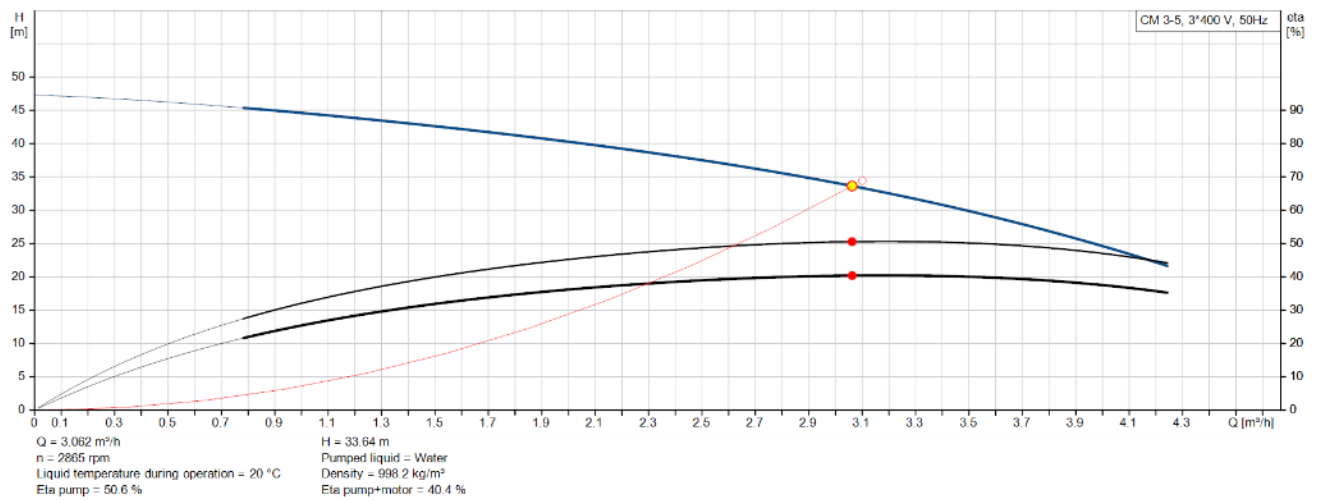
- Flow rate of up to 480 L/m (mid-curve)
- Head pressure of up to 7 bar
- Fully WRAS approved
- Dry run protection
- Advanced variable speed inverters
- Glycerine filled pressure gauge
- Stainless steel fittings
- In-stock - immediate delivery



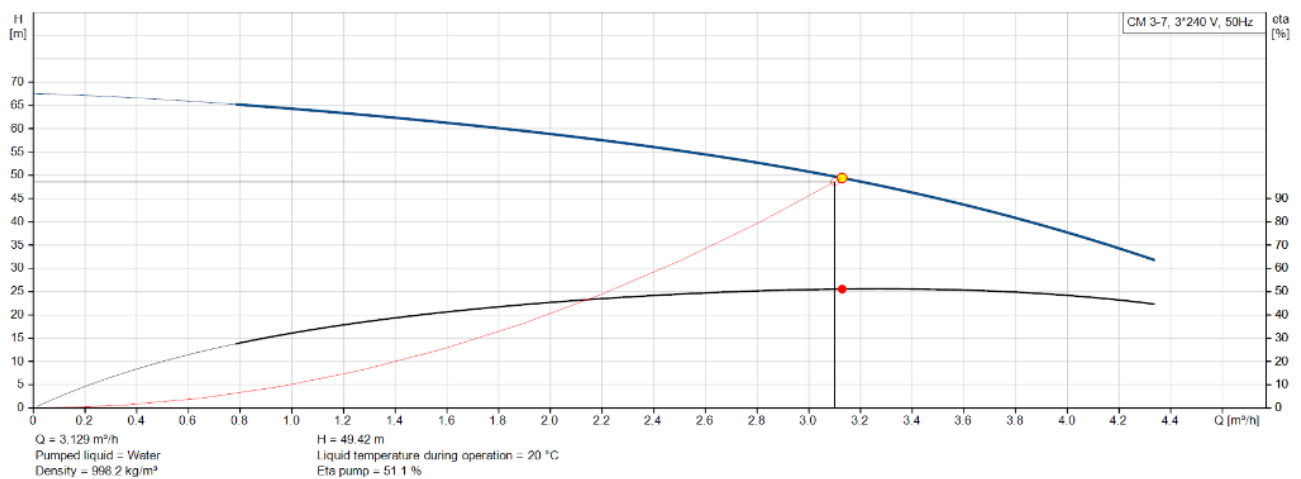
SPECIFICATIONS

Model Ref	Mid-Curve Duty		DN1	DN2	Power Supply	kW	HP	FLC
	(Flow L/m)	Pressure (bar)						
3RS3-5/8/GF/ARC	126	3.8	2 ½"	2"	3x240v	3x0.6	3x0.8	3x1.5
3RS3-7/8/GF/ARC	126	5.5	2 ½"	2"	3x240v	3x1.1	3x1.4	3x2.6
3RS5-5/8/GF/ARC	198	4.2	2 ½"	2"	3x240v	3x1.1	3x1.4	3x2.6
3RS5-7/8/GF/ARC	198	6.0	2 ½"	2"	3x240v	3x2.2	3x2.9	3x3.3
3RS10-3/8/GF/ARC	495	3.8	2 ½"	2"	3x240v	3x2.2	3x2.9	3x4.6

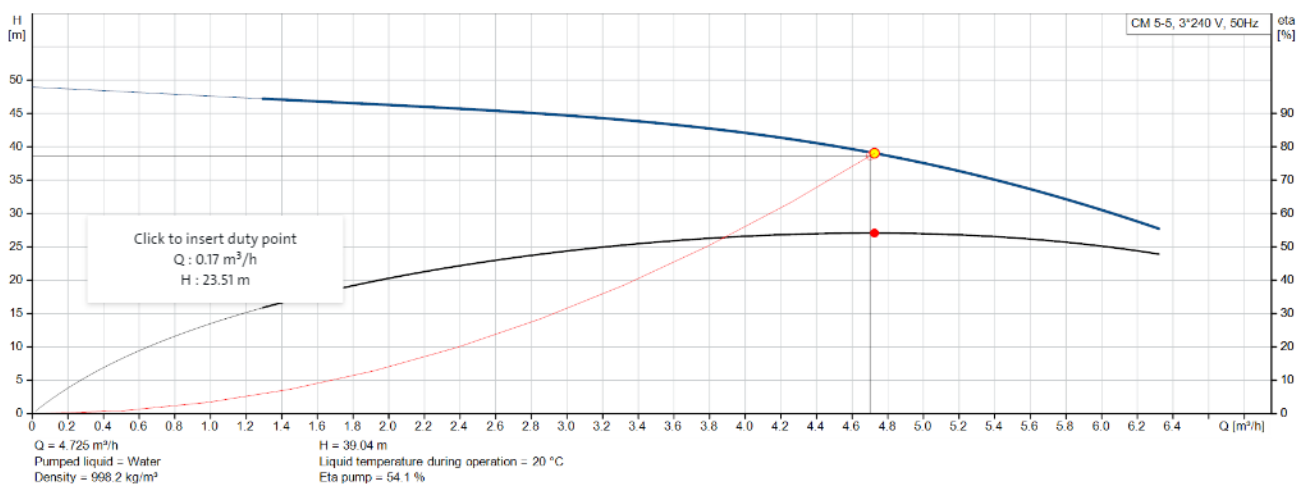
2RS3-5/8/GF - 3RS3-5/8/GF PUMP CURVE



2RS3-7/8/GF - 3RS3-7/8/GF PUMP CURVE

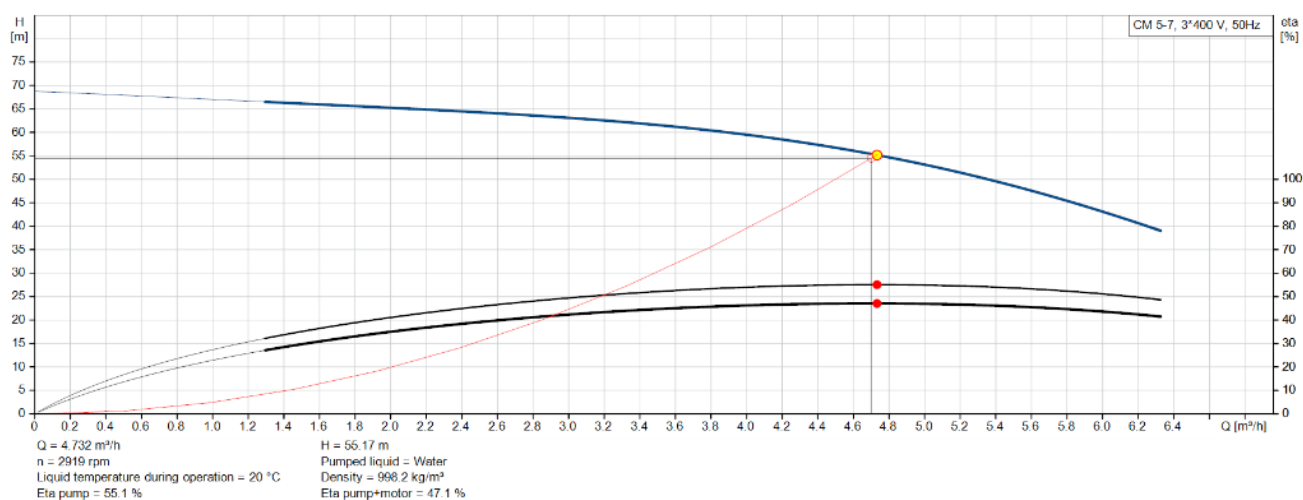


2RS5-5/8/GF - 3RS5-5/8/GF PUMP CURVE

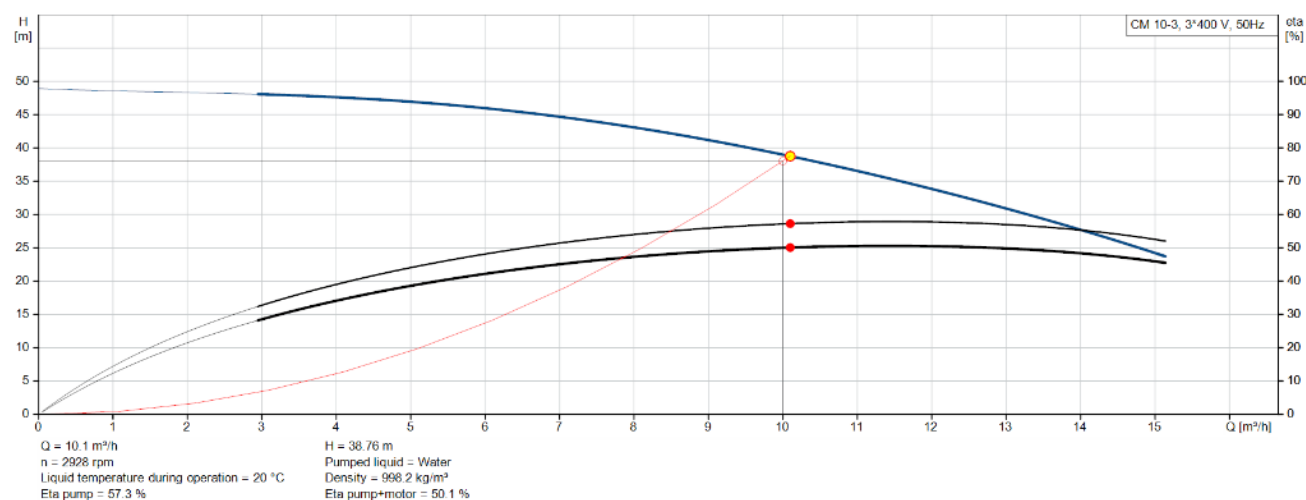


Pump curves shown are performance per pump.

2RS5-7/8/GF- 3RS5-7/8/GF PUMP CURVE

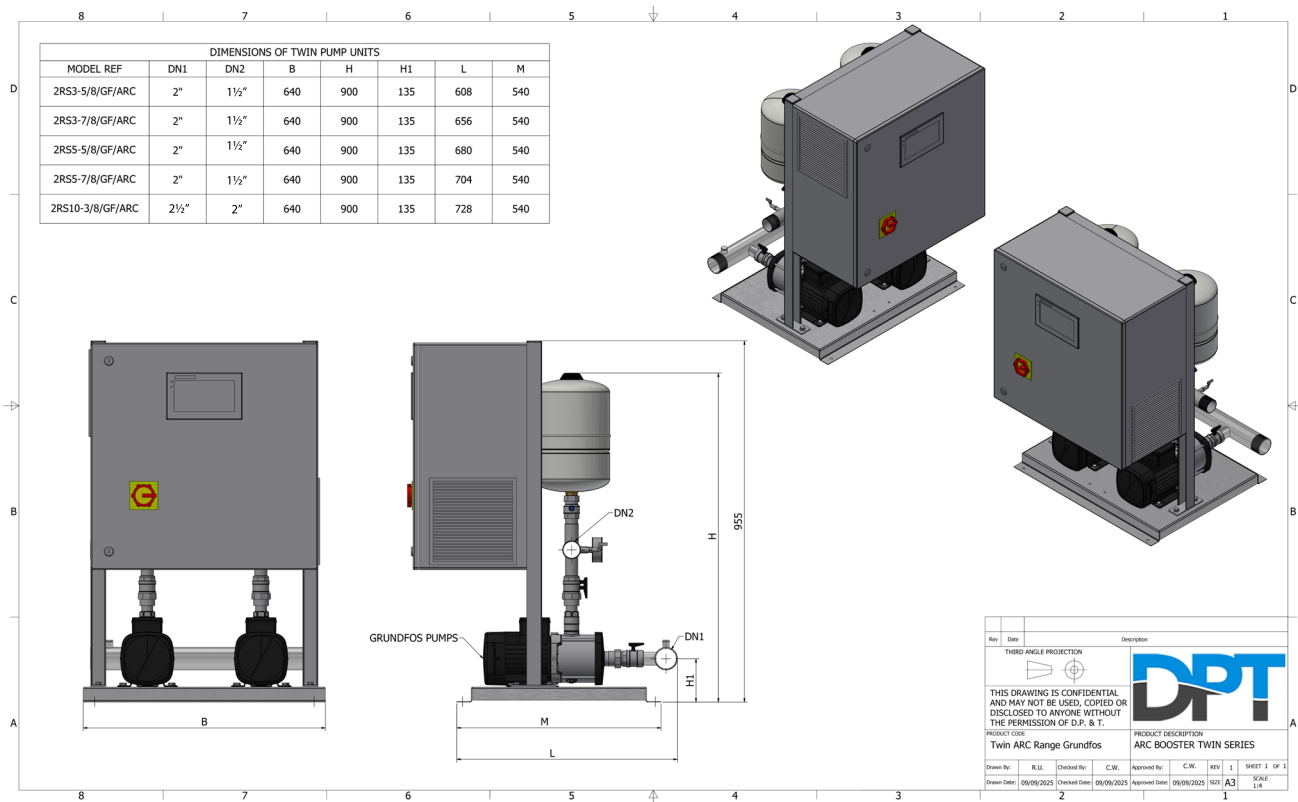


2RS10-3/8/GF - 3RS10-3/8/GF PUMP CURVE

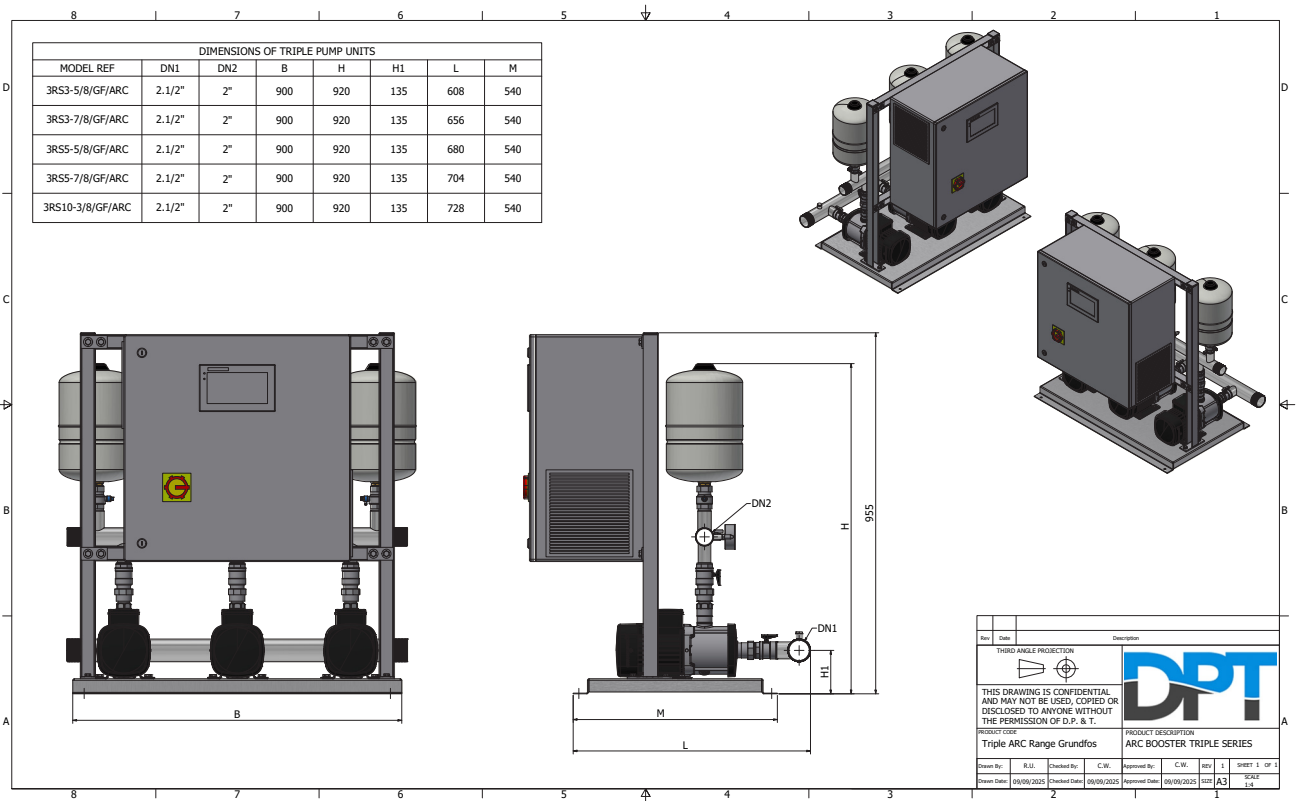


Pump curves shown are performance per pump.

TWIN ARC BOOSTER SET DRAWINGS



TRIPLE ARC BOOSTER SET DRAWINGS





COMMISSIONING & SERVICING

Cold water booster sets require care and maintenance, that's why we offer unmatched support packages and commissioning to compliment your purchase.

- Commissioning
- Call outs
- Scheduled maintenance
- Chlorinations
- Service packages to suit requirements

WHY SERVICE YOUR BOOSTER SET?

An active service agreement vastly reduces the risk of equipment failing by ensuring that your cold water booster set is kept in working condition 24 hours a day.

Our team of highly experienced engineers can spot potential issues before they turn into a problem which could potentially damage your equipment which would lead to higher costs and disruption to your environment.

We'll always remind you when services are due and we'll make sure appointments are booked in well in advance to ensure our duty of care to the customer.

NATIONWIDE COVERAGE

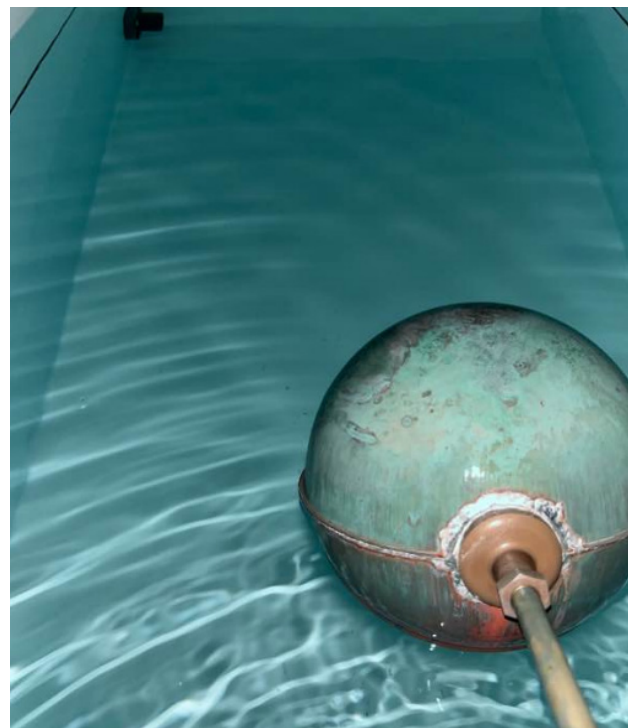
We cover the vast majority of British Isles, this means we have engineers in place to get on-site quickly with the skills required to service your equipment.

All of our engineers are expertly trained and have a wide range of industry leading certifications, so you can be sure that any work is undertaken by a registered professional. Each engineer carries a wide range of tools and replacements to get your system up and running as fast as possible.

COMMISSIONING

It is highly advised to have your new cold water booster set commissioned by a DPT engineer to guarantee the installation has been done correctly. During the commissioning visit a DPT engineer will carry out the following tasks:-

- Set pump parameters
- Electrical connections of pump
- System cycle and test
- Evaluation of installation
- Commissioning certificate upon completion



PLANNED MAINTENANCE

Regular maintenance of your cold water booster set is vital to ensure a long life, it is recommended that you have a yearly service of your equipment.

Each service will incorporate the following checks and adjustments:-

- A detailed inspection of mechanical components
- Full control system functionality check
- System adjustments where needed
- Visual inspection for leaks and operational issues
- Small remedial works where needed
- A full service report detailing all work

PRODUCT WARRANTY

DPT offers a full 1 year warranty on our products for a period of 12 months from the date of invoice.

Upon arrival, your cold booster set will come with a warranty card outlining all terms and conditions.

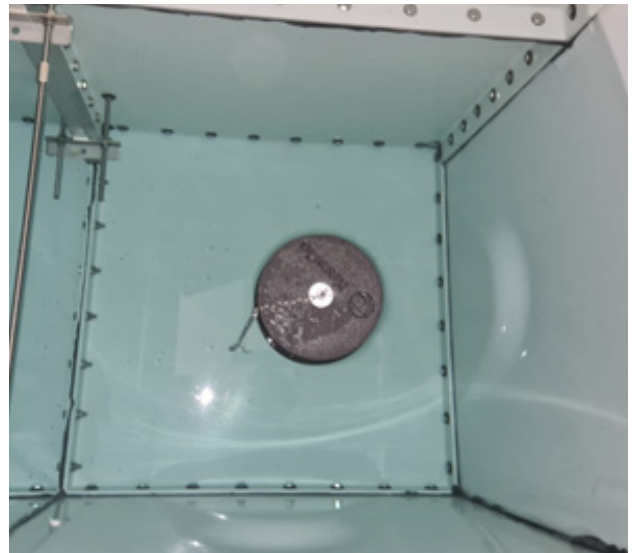
Extended warranties are available through service packages we can provide,

CHLORINATION

Water Utility companies will not allow connection of new water equipment onto their system until the system has been disinfected correctly.

We can provide services to issue certification of disinfection complying with local water authorities own specification to prevent the contamination of the water supply.

The external mains disinfection and chlorination is vital (and mandatory) to maintain the quality of the drinking water supply, this ensures that the water systems are safe to supply potable/wholesome water to outlets for drinking water and showers.



CONTACT DPT

If you would like to know more about this product, the services we offer, or have any questions, please contact us:-

SALES TEAM

0115 9444474 (Option 1)
enquiries@dpandt.co.uk

SERVICE TEAM

0115 9444474 (Option 3)
office@dpandtservices.co.uk

www.directpumpsandtanks.co.uk



DIRECTPUMPSANDTANKS.CO.UK