



# THE MINI CAT 5 BOOSTER SYSTEM





# MINI CAT 5 APPLICATIONS

**Suitable industrial and commercial  
CAT 5 cold water boosting  
applications:-**

- Irrigation
- Wash-down areas
- Chemical processing applications
- Industrial applications

## PRODUCT OVERVIEW

The Mini CAT 5 System is designed for all types of installations where a secure separation of the mains water supply is required or mandatory. Its primary purpose is to protect the potable water network from potential contamination caused by back flow from potentially hazardous substances.

Typical applications include slaughterhouses, mortuaries, dental practices, irrigation systems, laboratories, livestock drinking troughs, vehicle wash facilities, laundries, sprinkler systems, and fire protection installations. Break tanks are also essential in systems containing stagnant water or where additives such as chemicals, detergents, or antibiotics are introduced into the water supply.

The Mini CAT 5 System is suited to any type of installation where low flow requirements or limited installation space are a concern.

Common examples include laboratories, dental surgeries, and compact commercial applications.

The Mini CAT 5 System features an ultra-compact 8-litre break tank with a potable water connection positioned on the side of the unit, fully compliant with EN1717 standards.

This connection is KIWA certified, ensuring the highest levels of water safety and compliance.

The tank is fitted with an integrated float valve to maintain the correct water level, a pre assembled diaphragm pump provides flow and pressure to the secondary water network.

The entire system is supplied assembled and designed for easy removal, allowing fast and efficient servicing and maintenance.

For a discreet and professional finish, the pump and break tank are enclosed within a stylish sound insulating foam cover, making the system suitable for installation inside kitchen or cupboards.

The Mini CAT 5 System is supplied complete with a full installation kit and pressure vessel for a straightforward installation process.

## PRODUCT FEATURES

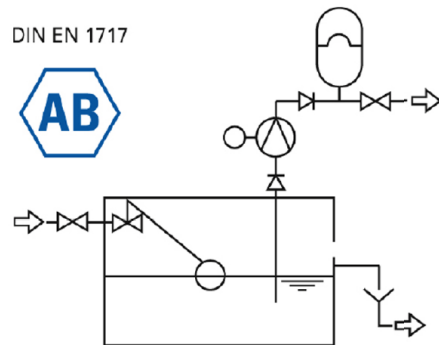
- Install ready with integrated pump
- Continuous water supply
- Compact dimensions
- Soundproof design
- REG 4 compliant (KIWA)
- Low installation cost
- Equipped with emergency overflow
- Automatic operation
- 8 litre water tank



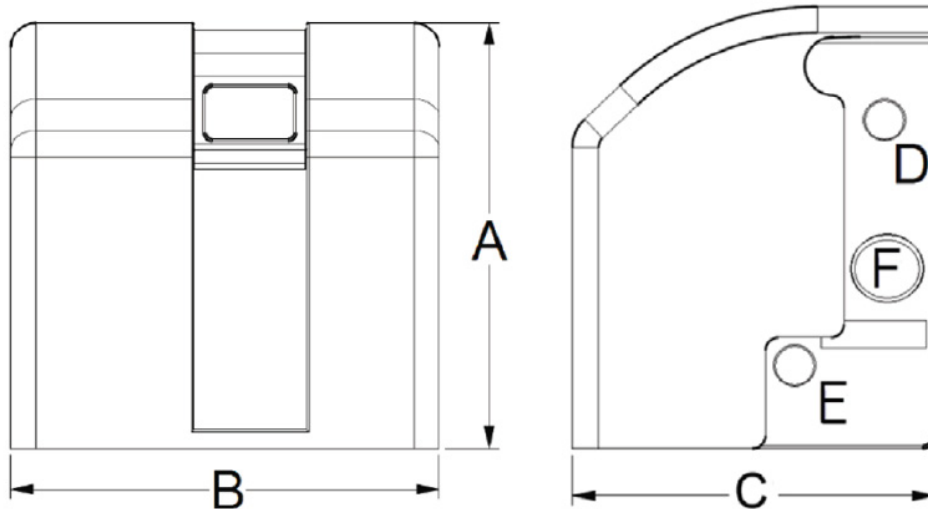
**PUMP CURVE**



**SYSTEM CONNECTIONS**



**SYSTEM MEASUREMENTS & TECHNICAL DETAILS**



DPT MINI CAT 5 TECHNICAL DETAILS	
PRODUCT AREA	DESCRIPTION
Height A	340mm
Width B	340mm
Depth C	279mm
Drinking Water Supply D	3/4"
Pressure Pipe E	3/4"
Overflow F	40mm
Weight (empty)	6 kg
Volume	8 Litre
Pump Type	Membrane Pump
Switch-off Pressure	3.0 bar
Capacity	900 l/h
Power	Max. 120W
Voltage	230v / 50Hz

**DPT**

[DIRECTPUMPSANDTANKS.CO.UK](http://DIRECTPUMPSANDTANKS.CO.UK)