



01643 703 358

CALL US MON-FRI 8.30PM - 5PM

WWW.TANKS-DIRECT.CO.UK

polytank® red

fitting instructions

for all plastic cisterns to meet requirements of BS4213:2004, WRAS and current water regulations

These instructions are intended as a guide only and all installations are the responsibility of the installer and must be carried out to good working practices and in accordance with Water Supply (Water Fittings) regulations 1999.



4 Gallon / 18 Litre Insulated Expansion Polytank

Product Code:	RED4
Capacity:	18 Litres / 4 Gallons
Length:	540mm / 21"
Width:	320mm / 13"
Height:	350mm / 14"



POLYTANKRED is unique and saves plumbers and installers valuable time. POLYTANKRED comes to the plumber or installer complete and is the perfect product to work alongside a domestic boiler.

POLYTANKRED is the only approved insulated fully assembled primary feed and expansion cistern on the market today.

This insulation is a high density specialist fibreglass. When tested in accordance with BS4213: 2004 gives improved figures of heat retention over all other methods of insulation.

Fully Assembled and Insulated Primary Expansion Polytank.

All required components are fitted in POLYTANKRED so there is no requirement to assemble. The installer has no need to drill and to clear up the mess made by drilling. There is no measuring required and overall POLYTANKRED can be installed in virtually no time.



CALL US MON-FRI 8.30PM - 5PM

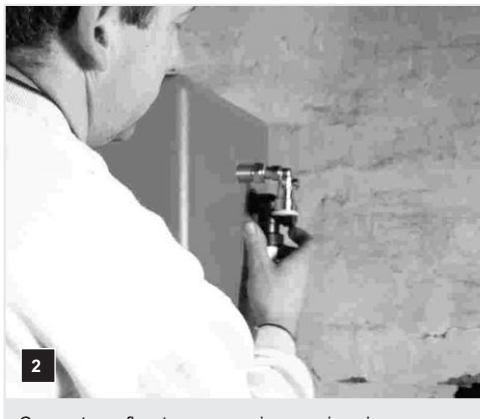
01643 703 358

WWW.TANKS-DIRECT.CO.UK



1

Remove tank from box and put onto a pair of heavy-duty brackets or across ceiling joists.



2

Connect overflow to compression warning pipe assembly ensuring warning pipe accommodates incoming supply.



3

Connect incoming cold feed into the push fit service valve. This push fit service valve accommodates both 15mm copper or 15mm plastic pipe.



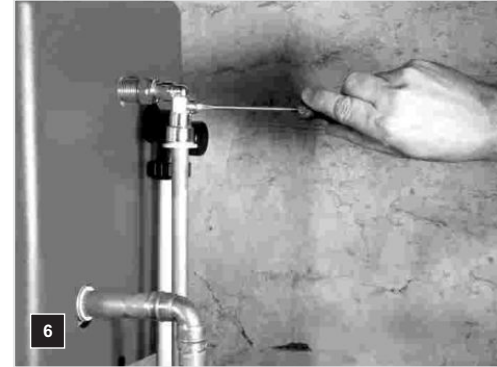
4

Connect outlet into 22mm push fit tank connector. This push fit tank connector accommodates both 22mm copper and 22mm plastic pipe.



5

Remove expansion pipe cap and fit 22mm expansion pipe through rubber grommet.



6

Turn on the cold water supply (stop cock usually under the kitchen sink) and then turn the service valve using a screw driver, to the on position (in line with water flow).

The above illustrations show a normal tank installation. Circumstances and access can change the approach but we hope the above extensive procedure, in pictures, gives anyone installing a PolytankRed the ability to deal even with the most difficult circumstances and still do the job right.

We apologise, in advance, to any professional plumber or installer who regularly installs our tanks. we appreciate that you do not need this level of fitting instruction.