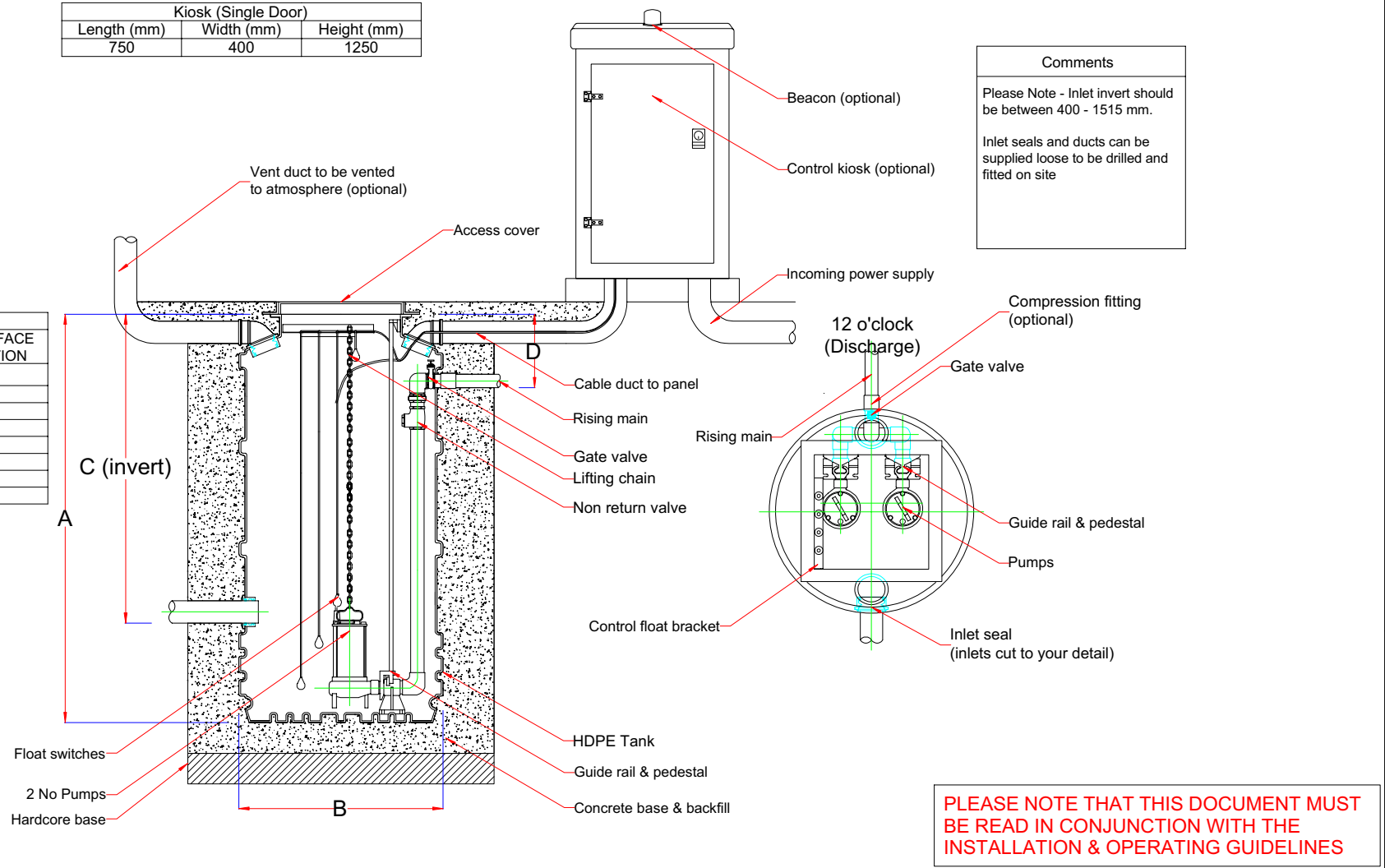


Kiosk (Single Door)		
Length (mm)	Width (mm)	Height (mm)
750	400	1250

Fabrication Specifications				
ITEM	INDEX	DEPTH (mm)	DIA. (mm)	CLOCKFACE POSITION
Tank depth	A	2000	-	
Tank Ø	B	-	1000	
Inlet	C1		110	
Inlet	C2			
Inlet	C3			
Discharge	D		63	12
Cable duct			110	
Vent			110	



**Comments**

Please Note - Inlet invert should be between 400 - 1515 mm.

Inlet seals and ducts can be supplied loose to be drilled and fitted on site

**PLEASE NOTE THAT THIS DOCUMENT MUST BE READ IN CONJUNCTION WITH THE INSTALLATION & OPERATING GUIDELINES**



REV	DETAIL	DATE	DRAWN

Tanks Direct Ltd  
 Channel House, Mart Road, Minehead, Somerset, TA24 5BJ  
 T: 01643 703358 F: 03332 223858  
 sales@tanks-direct.co.uk www.tanks-direct.co.uk

TITLE	CUSTOMER
Twin rigged Ø1000 x 2000 mm typical layout	

DRAWING NO	DATE	DRAWN
111158	09/11/2018	gf
THIRD ANGLE PROJECTION		SCALE
		NOT TO SCALE
TOLERANCE +/- 2%		SHEET
		1 of 1
REV		0