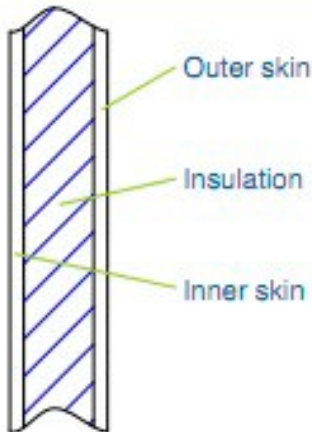


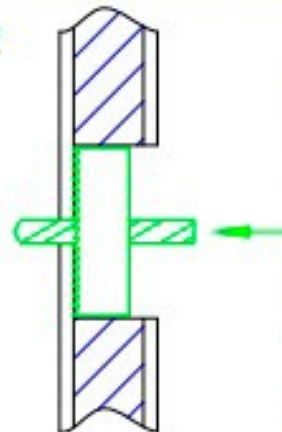
On-site Connection Fitting Instructions for One Piece, Two Piece & Sectional Tanks

1



Purewater one-piece tanks are supplied with 25mm insulation encapsulated within the tank body. Fitting connections on site is a quick and simple procedure.

2

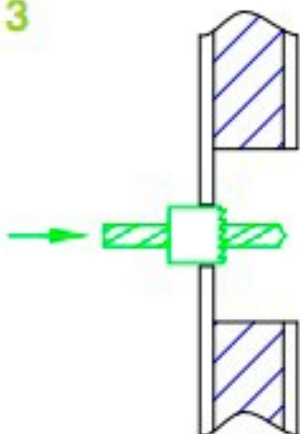


First select the correct hole saw to provide enough clearance to allow tightening of the connection to be used. For example a 100mm dia hole should be suitable for a connection up to 42mm.

Using the hole saw, cut through the outer Grp skin along with the insulation layer. Ensure that the pilot drill passes through the tank inner skin but do not allow the hole saw to do so.

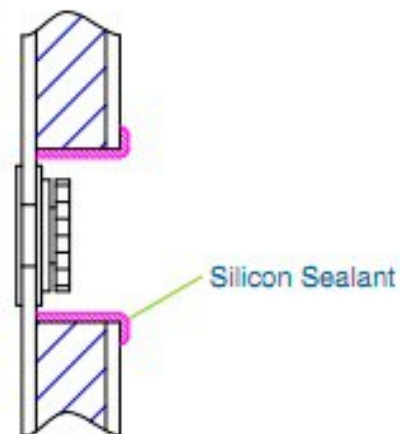
If there is evidence of the adhesive used to bond the insulation to the tank inner, remove this to ensure a flat surface for the connection to mate to.

3



Select the correct hole saw to suit the outside diameter of the tank connector to be fitted. Cut through the tank inner skin.

4



The tank connector can now be fitted to the tank, sealed and tightened. Close off the exposed insulation with a bead of silicon sealant or similar.